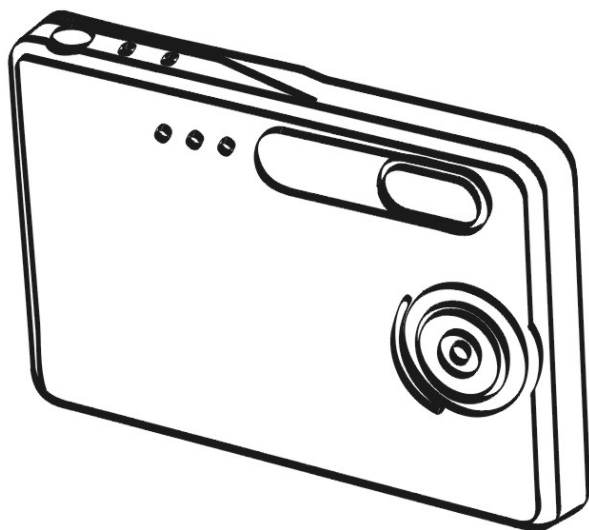


# **Ultra Slim Digital Camera**



# **USER MANUAL**

## Table of Contents

1	Brief Description.....	2
	Package Contents .....	2
2	Before Using Your Camera .....	2
	Digital Still Camera Specification .....	2
	Capturing good pictures.....	3
	Identifying the parts .....	4
3	Using Your Digital Camera .....	5
	Charging the battery.....	5
	Lithium-polymer battery tips .....	5
	Turning on the camera .....	6
	Turning on the LCD.....	6
	Understanding LCD icons.....	6
	Mode selection .....	6
	Capture mode .....	7
	Capture mode menus.....	7
	Capture mode with timer on .....	8
	Playback mode .....	9
	Playback mode menu .....	9
	USB mode .....	9
	USB mode activity .....	9
	Using Secure Digital (SD) memory cards .....	10
	Changing resolution .....	10
	Turning sound on/off .....	11
	Taking pictures.....	11
	About Autobrite® technology .....	11
	Low light lock-out.....	11
	Deleting an image/images.....	12
	Formatting internal flash memory or SD card .....	12
4	Installing the Software .....	13
	System requirements .....	13
	PhotoImpression 5.0 Installation .....	14
5	Connecting the Digital Camera to Your PC .....	15
6	Troubleshooting .....	18
7	Safety Notes .....	20
8	Trademarks .....	22

## 1 Brief Description

Your digital camera with color LCD display is similar to the size of a credit card - only 14 mm thick. The camera's portability and convenience are enabled by its "worry free" rechargeable battery, simple user interface, and easy image download when you connect the camera to a PC with the supplied USB Docking Station.

### Package Contents

The package contains all the items listed below:

Camera	USB cable	User Manual
CD-ROM	Carry Bag	
Neck Strap	Docking Station	

## 2 Before Using Your Camera

*Before using your camera, please read the **Safety Notes** in section 7 and the rest of this User Manual carefully.*

### Digital Still Camera Specification

Function	Digital Still Camera
Image Sensor	3.1 MP CMOS (interpolation 16 Mega Pixels)
Display	1.8" Color TFT LCD
Exposure Mode	Auto
Shutter Speed	1/15 second to 1/1,000 second
Lens	Glass, F.L. = 8.2mm, F/3.0 (equivalent to 42mm lens on a 35mm camera)
Focus Range	Fixed, 1.5m (4.9ft) to infinity
Controls	Power on-off, mode selection, shutter button, LCD on-off, menu, select, arrow up, arrow down
Flash Distance	Approx. 0.8m ~ 2m
Image Resolution Settings	Large: 4620 x 3465 Pixels (16 MP, Hardware interpolated) Medium: 2000 x 1500 Pixels Small: 1000 x 750 Pixels
White Balance	Autobrite*
Built-in Storage (16 MB Flash memory )	Large resolution: 7 images Medium: 7 images Small: 15 images
Memory Card Slot	SD card ONLY
USB Interface	USB 1.1
System Requirements	266 MHz Pentium 2 or greater with MS Windows ME, 2000, or XP
Dimensions	93 x 60 x 14 mm
Weight	74g
Battery Type	Built-in Lithium-polymer battery (rechargeable)

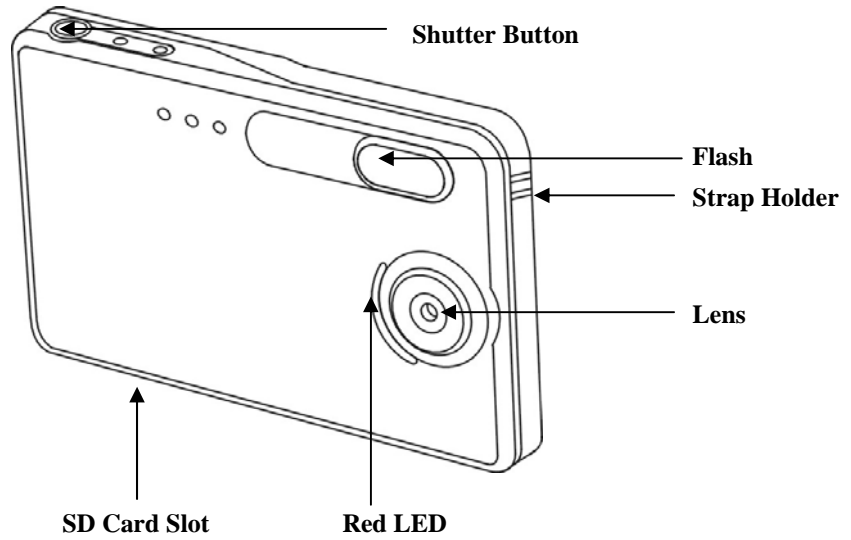
\*Autobrite is a registered trademark of SMA L Camera Technologies, Inc. of Cambridge, MA, USA.

## **Capturing good pictures**

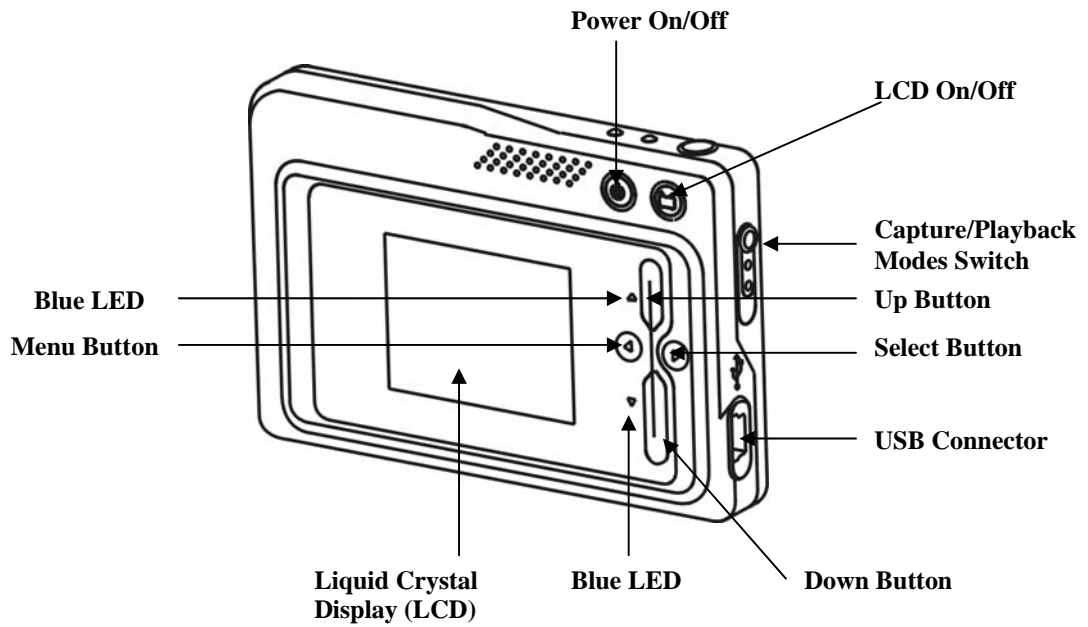
- Hold the camera steadily.
- Under dimmer environment, the camera needs longer time to capture a picture.
- Make sure your fingers will not block the lens and flash.

## Identifying the parts

### Front View



### Back View



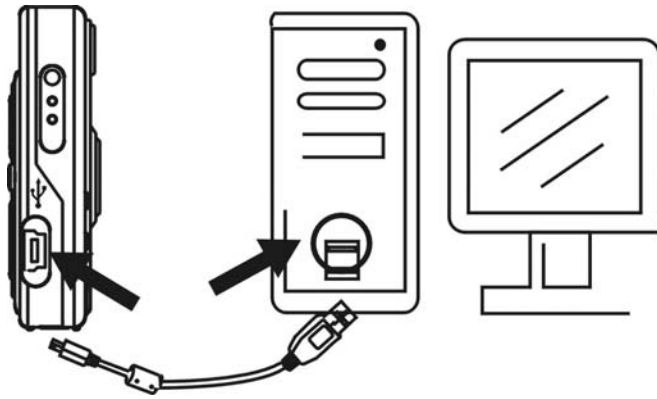
## 3 Using Your Digital Camera

### Charging the battery

Long battery life is one of the key benefits of this camera compared to other digital cameras. On a full charge, the camera will take hundreds of images. Your camera battery has already been charged prior to shipment. So, you should be able to take pictures without recharging it. However, just to be safe, you may want to follow the instructions below to make sure that your camera is fully charged.

**Note:** Install the provided software before initial charging of the camera.

The Lithium-polymer battery used in the camera recharges automatically when the camera is plugged into a PC via the USB cable. When the battery is charging, the blue LED will blink. After fully charged, the blue LED remains ON.



### Lithium-polymer battery tips:

- **Safety note:** Always observe the precautions described in Section 7.
- It takes approximately 3 hours to fully charge a battery.
- The battery can be charged at any time.
- If power is low, the red LED blinks 5 times and then the camera turns off. Recharge the battery immediately.
- A fully charged battery allows the camera to take about 90 pictures with Flash and 440 pictures without Flash.
- To ensure that your battery lasts as long as possible, switch the camera off when you are not using it.

## Turning on the camera

Press the Power button once to turn on the camera. Press it again to turn the camera off.


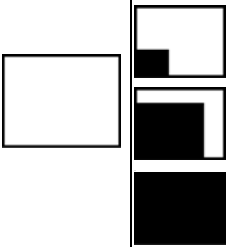



### Note:

- The camera has an automatic time-out feature to conserve battery life. After one minute (or 2 minutes) the camera will time-out (turn off). When timed out, the camera will not take a photo when you push the shutter button. Press the Power button once to turn on the camera again.
- If power is low, the red LED blinks 5 times and then the camera turns off. Recharge the battery immediately.

## Turning on the LCD

The LCD screen comes on automatically in preview mode when the power is turned on. Press the LCD button to switch to preview mode. Press the LCD button again to turn off the LCD.

## Understanding LCD icons

LCD	Description
	Picture Counter: Shows remaining number of shots.
	Resolutions: : SMALL 1000 x 750 pixels : MED 2000 x 1500 pixels : LARGE 4620 x 3465 pixels
	Indicates Battery Charge State : The battery is fully charged : The battery is about half-charged : Out of battery: need to recharge immediately
	Secure Digital card indicator
	Flash indicator: Flash icon blinks while charging. Steady on when flash is set to Automatic.

## Mode selection

Your camera has three modes of operation:

- Capture mode (for capturing images)
- Playback mode (for reviewing and deleting images)
- USB mode (for downloading images to a computer and charging the battery)

When the USB cable is connected to the camera and a computer, the camera automatically goes to USB mode.

## Capture mode

The blue LED will remain ON when the camera is ready to take pictures. If the blue LED blinks, the camera is not ready. It blinks for **one** second while storing an image and for **five** seconds while recharging the flash.

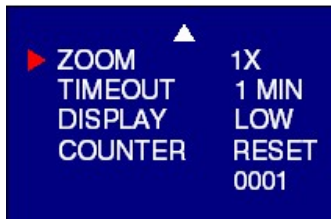
### Capture mode menus

- Press the Menu button to access the menus.
- Use the Up and Down arrow buttons to make selections.
- Press the Select button to cycle through the options.
- Press the Menu button to save your selections.

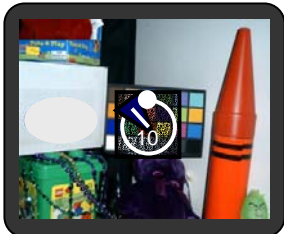
Function Menu	Setting	Description
FLASH	AUTO	Flash functions automatically in the dim condition
	OFF	Flash is disabled
	ON	Force flash to function under any lighting condition
TIMER	OFF	Self-timer is off
	10 S	10 seconds delay <b>Note:</b> After taking the picture, self-timer function turns off
	2 S	Two seconds delay <b>Note:</b> After taking the picture, self-timer function turns off
SIZE	LARGE	Takes 4620 x 3465 Pixels image
	MEDIUM	Takes 2000 x 1500 Pixels image
	SMALL	Takes 1000 x 750 Pixels image
SOUND	ON	Turns audio beeps on
	OFF	Turns audio beeps off
LANGUAGE	ENG	Displays English menu
	FRA	Displays French menu
	ITA	Displays Italian menu
	DEU	Displays Deutsch menu
	ESP	Displays Spanish menu
	日本語	Displays Japanese menu
	汉语	Displays Chinese menu
	NL	Displays Dutch menu
ZOOM	POR	Displays Portuguese menu
	1x	Takes/Displays picture in normal size
	2x	Takes/Displays picture in double size
TIMEOUT	4x	Takes/Displays picture in 4 times size
	1 MIN	Turns camera off automatically after 1 minute of inactivity
DISPLAY	2 MIN	Turns camera off automatically after 2 minutes of inactivity
	HIGH	Sets high brightness LCD
COUNTER	LOW	Sets low brightness LCD
	RESET	Resets the picture counter to zero



Typical capture mode menu displays



**Capture mode with timer on**



**Note:** The timer icon is in the center of the display. When the timer is on, and set to 10 seconds (for example), the front red LED begins blinking when the shutter button is pressed. It begins counting down with 8 seconds of slow blinking (with audio beeps if the sound is on) and 2 seconds of fast blinking (with audio beeps). After the picture is taken, there is a 1 second audio beep and the red LED remains on.

## Playback mode

Use the Playback mode to review images you have captured and to review images in order to delete them. Select Playback mode by sliding the mode switch on the right hand side of the camera. The last picture taken is displayed first.

If the camera is empty, the display will say “No pictures on camera.” Either SD card or internal memory will display. In order to review pictures in internal memory, the SD card must be removed.

After a picture has been deleted, the camera will return to Playback mode.

## Playback mode menu

Menu	Description	Selection
Delete	Confirm delete of current image	Select YES or NO
Delete All	Confirm delete of all images	Select YES or NO
Format	Format the SD memory card/internal memory	Select YES or NO

## USB mode

Use the USB mode to download images to your computer and to recharge the camera’s battery. The mode selection switch can be in either position (Capture or Playback).

Connect the mini USB plug to the mini USB socket on the camera and connect the larger size USB plug to the USB socket on your computer. You will hear a low-high beep when connecting and a high-low beep when disconnecting.

**Note:** All camera buttons are inactive during USB mode.

## USB mode activity

Status	Activity
Blinking blue LED	Charging
Blue LED remains on	Fully-charged
Red LED blinks 3 times	Camera communicating with computer
Red LED remains on	USB connected and transferring data
Fast blinking red LED	When connecting camera to PC before driver is installed. Please install driver.

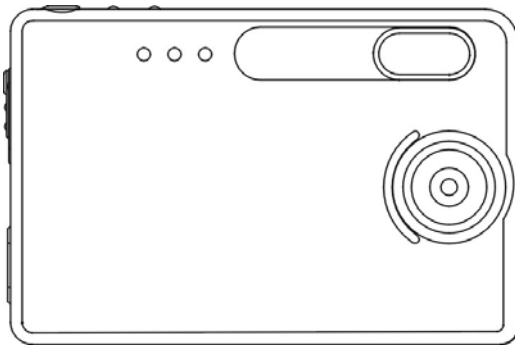
**Note:**

- Red LED blinks continuously: Need to install driver to the computer.
- See Section 5 on how to download images to your computer.

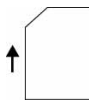
## Using Secure Digital (SD) memory cards

**Note:** Only Secure Digital (SD) memory cards are compatible with the camera.

To use a SD card, insert the card into the SD slot in your camera. The SD card indicator on the LCD is shown.



SD card icon is displayed  
When card is inserted



Insert SD card in  
the card slot

It may be necessary to format the SD card if the card has been used in devices other than your camera. To format, refer to **Formatting Flash Memory or SD Card** in section 3.

**Note:** “0” displays at lower right of the LCD display if

- SD card is full, or
- SD card is write-protected, or
- An error writing to the card.

## Changing resolution

Your 3.1MP Digital Camera offers three choices in resolution: Large, Medium and Small. Large resolution is 4620 x 3465 pixels, Medium resolution is 2000 x1500 pixels, and Small resolution is 1000 x 750 pixels. The higher resolution setting allows for an image to be printed as large as 8 x 10 inches.

To change the resolution:

- Turn the camera on and press the mode button.
- Select Size and then select LARGE, MED or SMALL.

## Turning sound on/off

- Turn the camera on and press the mode button.
- Select Sound and then select ON or OFF.

## Taking pictures

To take pictures using your Digital Camera:

- Turn the camera on.
- In low light conditions, check to make sure the flash is ready. Be sure the Flash is set to AUTO.
- Use the color LCD display to capture the preferred image. The color LCD comes on automatically in preview mode when the camera is turned on. Press the LCD button again to view preview mode with icons.
- Hold the camera still and press the shutter button.
- The LCD will indicate when the picture has been successfully taken by increasing the number on the display. If the sound feature is turned on, one short beep indicates that a picture is taken.

## About Autobrite® technology

The camera offers the benefits of a technology known as Autobrite. This technology automatically adjusts the exposure and captures crisp details in scenes where both dim and bright lighting conditions are present, such as glare or backlighting. Most existing digital cameras produce washed out or silhouetted images under such conditions. We suggest you try to avoid taking pictures pointing directly at bright objects (such as the sun), due to the potential impact of extremely bright lighting on image quality and lens flare.

Autobrite is proprietary to SMaL Camera Technologies, Inc. of Cambridge, Massachusetts, USA.

## Low light lock-out

Low light lock-out is a feature that prevents the camera from taking pictures in low light settings when the flash is not ready. When low light lock-out is enabled the camera will give a warning beep – even if the sound is off.

**Note:** To override low light lock-out, continue holding the shutter button for 1 second after the warning beep.

## **Deleting an image/images**

To delete an image or images:

- Turn the camera on and slide the Capture/Playback modes switch on the right hand side of your camera to Playback mode.
- Press the Menu button and select “DELETE”.
- Use the up/down arrow buttons to select “*Yes*” to delete the image or “*No*” to save the image.
- Press the Select button to confirm your selection. Two audio beeps will confirm your selection.
- To resume taking pictures slide the Capture/Playback modes switch on the right had side of your camera to Capture mode.

To delete all the images on the camera:

- Turn the camera on and switch the mode button to Playback mode.
- Press the Menu button and select “DELETE ALL”.
- Use the up/down arrow buttons to select “*Yes*” to delete the image or “*No*” to save the image.
- Press the Select button to confirm your selection. Two audio beeps will confirm your selection
- To resume taking pictures slide the Capture/Playback modes switch on the right had side of your camera to Capture mode

## **Formatting internal flash memory or SD card**

**Warning:** Formatting a SD card or flash memory will delete all information.

**Note:** If formatting a SD card, insert the card into the camera. Remove the SD card if you are formatting the internal flash memory.

To format the internal flash memory or SD card:

- Turn the camera on and switch the mode button to Playback mode.
- Press the Menu button and use the up/down arrow buttons to select “FORMAT”.
- Press the Select button to confirm your selection.
- Use the up/down arrow buttons to select “YES” or “NO”.
- Press the Select button to confirm your selection.
- To resume taking pictures, slide the switch once back to Capture mode.

## **4 Installing the Software**

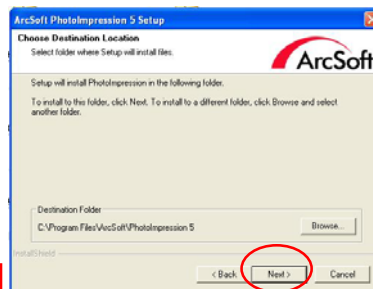
### **System requirements**

#### **Windows**

- Windows ME, 2000, or XP
- 266 MHz Pentium or above
- 32MB RAM
- 200MB available Hard Drive space
- CD-ROM or DVD Drive
- Available USB port

## PhotoImpression 5.0 Installation

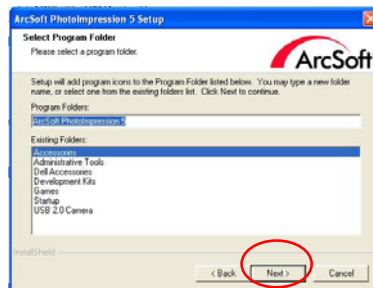
1. Insert installation CD into your PC's CD-ROM drive.
2. The introduction screen will appear automatically.
3. Click "ArcSoft PhotoImpression 5.0".
7. Click "Next".



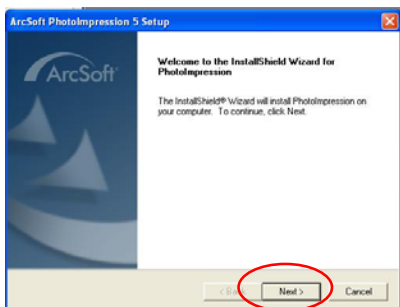
4. Choose Setup Language.



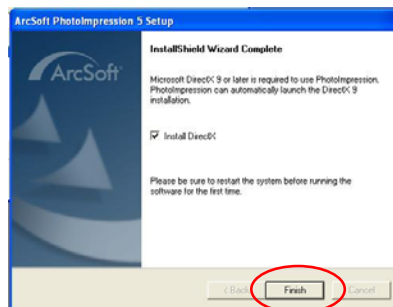
8. Click "Next".



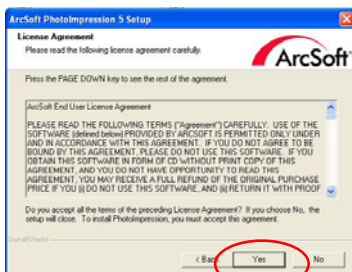
5. Click "Next".



9. Click "Finish".



6. Click "Yes".

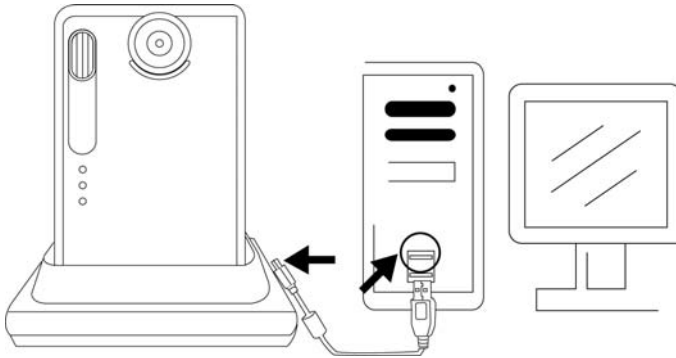


**Note:** To find out more about PhotoImpression 5.0 or how to use it, consult online help by clicking the "?" icon or "Help" on the pull-down menu.

## 5 Connecting the Digital Camera to Your PC

After the software has been installed on your computer, plug the camera into an available USB port using the provided USB cable. The Windows operating system requires that you install drivers for the camera so that the camera and computer can communicate properly.

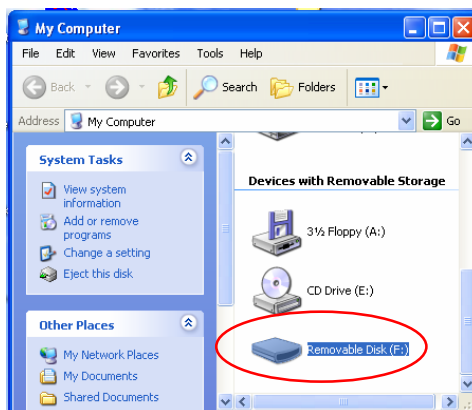
- Connect your camera to an available USB Port.



- Click “My Computer”.

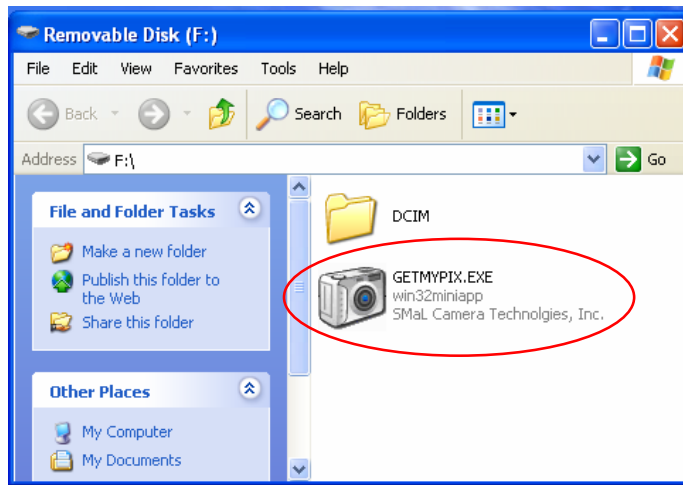


- Removable Disk Displayed.
- Click “Removable Disk”.

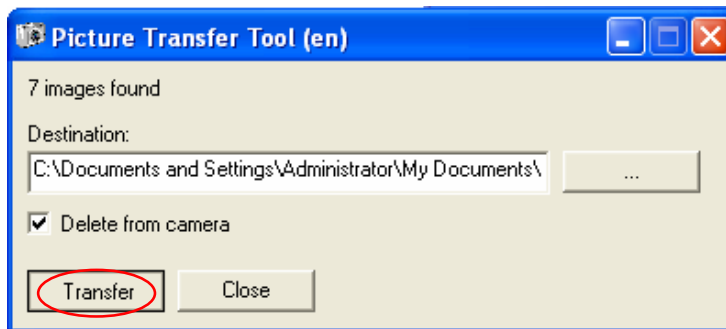




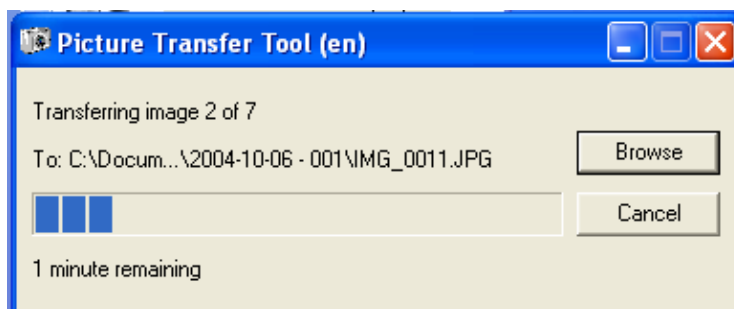
- Click “GETMYPIX.EXE”



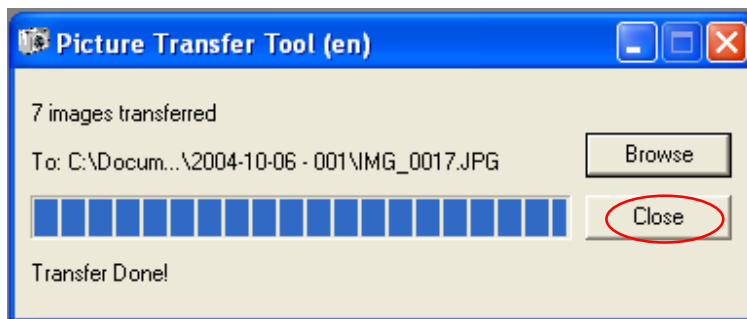
- Click “Transfer” or right box to browse a destination folder to download the photos.



- Photos transferring, this may take a few moments.



- Click “Close” when “Transfer Done!” appears. The photos have been downloaded to the specific folder.



## 6 Troubleshooting

<b>Problem</b>	<b>Symptom</b>	<b>Likely Cause</b>	<b>Solution</b>
No power	Camera will not turn on	Battery is out of power	Recharge the internal battery (section 3)
Capturing	Image appears blurred or dark	The camera or subject was moving when the shot was taken	Hold the camera firmly
		The subject is too close	Move away from the subject
		The lens is dirty	Clean the lens with a soft cloth
	Flash does not go off as expected	Flash has not finished charging	Wait until the blue LED is steady
		The flash has been turned on	Make sure the flash is set to "AUTO" or "OFF"
	Camera will not focus	Subject is not in the center of the LCD	Adjust the camera to focus the objects
	Cannot take pictures when the shutter button is pressed	Camera is not turned on	Turn on the camera
		No space on the SD card / internal memory	Delete unwanted files (section 3) or insert a new SD card (section 3)
The camera has timed out		Turn the camera on	
PC Connection	PC does not recognize the camera	Check the USB cable connection	Make sure both ends of the USB cable are connected
		Interference from other USB devices	Disconnected other USB devices

		Check computer	Connect the camera to the PC with the USB cable and select [My Computer] – [Control Panel] – [System] – [Device Manager]. In the [Device Manager] window delete [Compose USB device] or [Unknown device] in [Other devices]. Then disconnect the camera and install the software before reconnecting the camera to the PC.
Camera malfunctions while in used	Electrostatic discharge interfered with the camera	Check if the camera is connected to the PC	Turn off the camera and then turn it back on. If connected to the PC, disconnect the camera from the USB cord, and turn it off then on again.
LCD	The LCD does not light up	If you turn the power off with the LCD off, the LCD screen is still set to OFF the next time the power is turned on	Press the LCD button once to turn on the LCD
LCD displays “E2” when a SD memory card is inserted	Incompatible file system on SD memory card	Format SD card	Refer to <b>Deleting an image/Formatting internal flash memory or SD card</b> in section 3

## 7 Safety Notes

We strongly recommend that you read these Safety Notes (and associated materials) before using your camera.

### WARNING

- The enclosed disk is a computer CD-ROM. Never attempt to play this disk on an ordinary music CD player as it may produce extremely high noise levels that could damage your hearing or your audio equipment.
- The camera is a precision instrument. Never attempt to dismantle this device. There is a serious danger of a powerful electric shock.
- Do not drape the connection cord around your neck or otherwise treat the cable carelessly, as this could result in suffocation or injury.
- Do not leave the camera in locations exposed to direct sunlight, as this could cause a fire due to magnification by the lens.
- Do not bring the camera close to a flame or throw it into a fire.
- Do not drop the camera or otherwise subject it to strong impact.
- Do not immerse the camera in water.

### Notes on Copyright

Images recorded using your digital camera system cannot be used in ways that infringe copyright laws without the consent of the owner, unless intended only for personal use. Note that some restrictions apply to the photographing of stage performances, entertainments and exhibits, even when intended purely for personal use. Users are also asked to note that the transfer of memory containing images or data protected under copyright laws is only permissible within the restrictions imposed by those copyright laws.

### Liquid Crystal

If the liquid crystal display (LCD) is damaged, take particular care with the liquid crystal inside the panel. If any of the following situations arise, take the urgent action indicated:

- If liquid crystal comes in contact your skin: Wipe the area with a cloth and then wash thoroughly with soap and running water.
- If liquid crystal gets into your eye: Flush the affected eye with clean water for at least 15 minutes and then seek medical assistance.
- If liquid crystal is swallowed: Flush your mouth thoroughly with water. Drink large quantities of water and induce vomiting. Then seek medical assistance.

## **Handling Your Digital Camera Safely**

This camera contains precision electronic components. To ensure that images are recorded correctly, do not subject the camera to impact or shock while an image is being recorded.

### **Places to Avoid**

Do not use or store the camera in the following types of locations:

- In the rain or in very humid, dirty or dusty places.
- Places subject to extreme temperature rises, such as in direct sunlight or a closed car in summer. Extremely cold places.
- Places subject to strong vibration.
- Places affected by smoke or steam.
- Places subject to strong magnetic fields (such as near motors, transformers or magnets).
- In contact with chemicals such as pesticides or next to rubber or vinyl products for long periods of time.
- Sandy places such as beaches or deserts, or places where there is wind-borne sand.

### **Note on Condensation**

If the camera is carried suddenly from a cold location into a warm location, water droplets may form on the inside of the camera or on the lens (condensation). When this occurs, switch the camera off and wait an hour before using the camera.

### **Cleaning Your Camera**

- Use a blower brush to remove dust from the lens, LCD and then wipe lightly with a soft, dry cloth.
- Do not scratch hard objects against the lens, LCD as these surfaces are easily damaged.
- Clean the body of the camera with a soft, dry, cloth. Do not use volatile substances such as thinners, benzine or insecticide, as these may react with the camera body finish and cause deformation or remove the coating.

### **Checked Baggage**

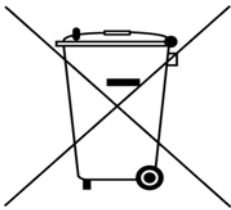
When traveling by air, do not place your camera in the check-in baggage. Baggage handling at airports may subject baggage to violent shocks, and the camera may be damaged internally even when no external damage is visible.

To prevent fire or shock hazard, do not expose the camera to rain or moisture.

## 8 Trademarks

- Autobrite is a registered trademark of SMaL Camera Technologies, Inc. of Cambridge, Massachusetts, USA.
- Microsoft and Windows are trademarks of the Microsoft Corporation of the U.S. and other countries. Windows is an abbreviated term referring to the Microsoft Windows Operating System.
- Pentium is trademark of Intel Corporation.
- All other company or product names are trademarks or registered trademarks of the respective companies.

### Disposal



**Waste electrical and electronic products must not be disposed of with household waste. Please refer to the retailer from whom you purchased this item for disposal instructions.**

**Packaging materials should be recycled using local facilities.**