

## Preface

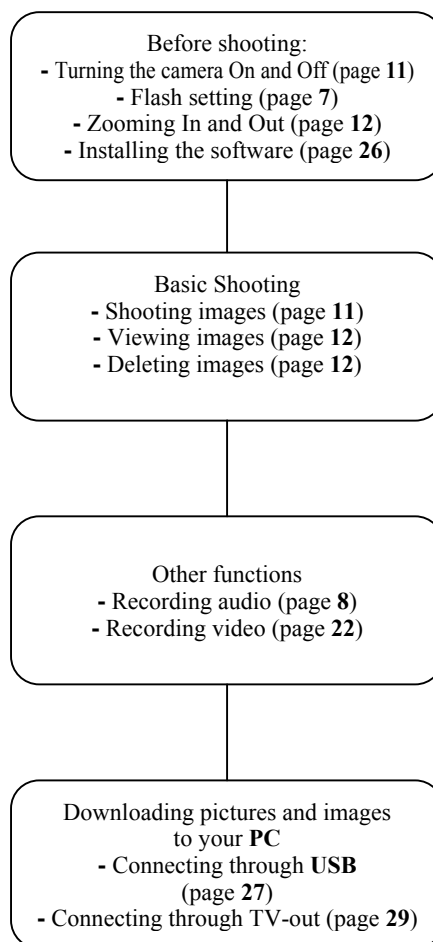
Thank you for purchasing this camera.

Equipped with three shooting modes (Capture Mode, Video Mode, and Playback mode), this camera will fulfill your entire digital picture processing needs. This card-sized and lightweight camera offers 3 mega pixels high-quality image along with precise 8M digital zoom. The built-in internal memory can store your images and videos. Through the USB cable connection, pictures and video clips can be easily transferred from the camera to the PC. The TV-out function allows pictures and images to be screened through the TV unit. Continuous shooting function allows users to take multiple frames in quick succession.

To make the best out of this camera, it is strongly suggested that you read through this manual prior to operating this camera.

## Quick Start

This quick start provides an overview function of this camera. For quick reference, please refer to the following flow chart:



Preface .....	1
Quick Start .....	2
Prior to Operating the Camera .....	4
Unpacking the Camera .....	4
Identifying Components .....	5
Basic Function Buttons .....	6
Loading the Batteries .....	9
Insert SD card .....	9
Basic Settings .....	10
Formatting the Internal Memory and <b>SD</b> Card .....	10
Basic Operating Procedure .....	11
Turning the Camera ON/OFF .....	11
Basic Shooting Skills .....	11
Zooming In/Out .....	12
Viewing Pictures .....	12
Protecting and Deleting Pictures .....	12
Three Main Modes and Instructions .....	13
Capture Mode .....	15
Video Mode .....	22
Playback Mode .....	24
Making Connections .....	26
Installing Software .....	26
Connecting through the USB .....	27
Connecting through TV-out .....	29
Appendix .....	30

## Prior to Operating the Camera

Setting up this digital camera is quick and simple. Follow these steps, and you'll be on your way to infinite boundaries.

## Unpacking the Camera

1. Clear all items from the box. (It is highly recommended that the box and wrappings are kept for future usage)
2. Double check for the following items:



CD-ROM



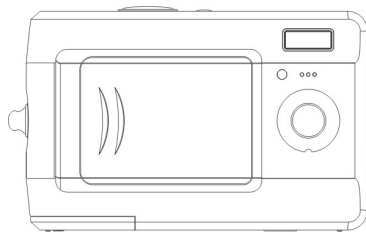
Pouch



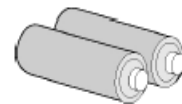
Mini USB cable



Video/Audio cable



Camera

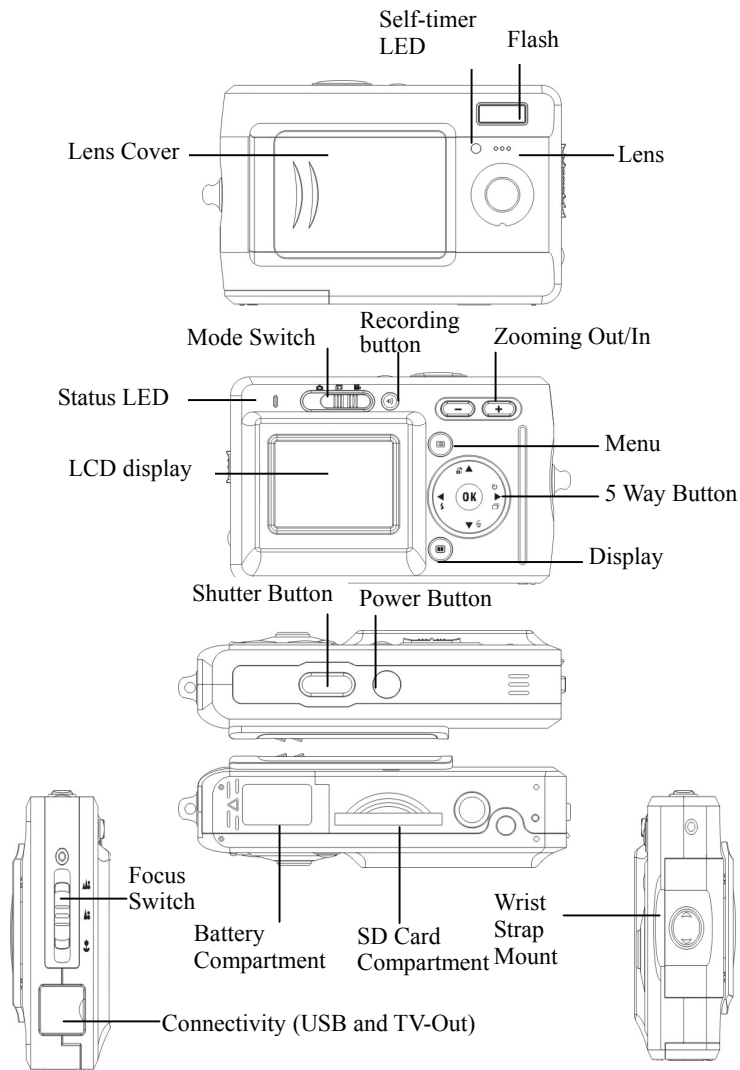


Batteries



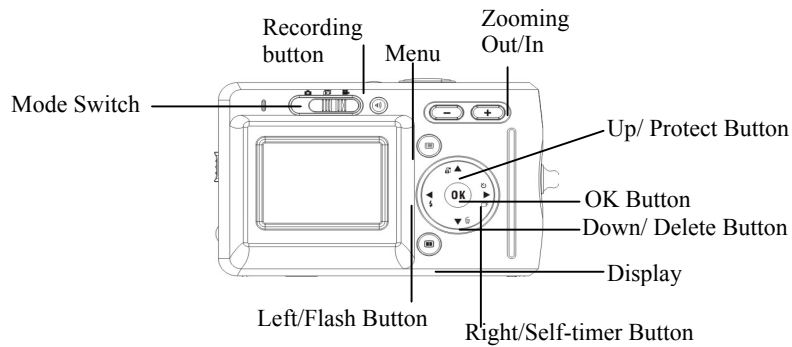
Hand Strap

## Identifying Components



## Basic Function Buttons

This section will explain the basic function buttons to instantly operate this camera.



**Self-timer:** The self-timer function is used in any of the following modes: Capture and Video. A tripod is highly recommended when using the self-timer. Press the right button to select self-time (press once (twice) to activate the shutter 2 (10) seconds after the shutter button is pressed fully.) When the icon appears on the LCD, press the shutter button to activate.



**Continuous shot:** This function allows 3 continuous shots. Continuously press the right button three times to activate this function.

**NOTE:**

1. Turn off the Flash prior to using the continuous shot function.
2. Under continuous shot, the flash will remain inactive.
3. If the internal or SD card have run out of memory, the continuous shot will not function.



**Flash:** This button can set flash as Force Off, Force On and Auto.

Force off: Default setting of flash mode

Auto: Press flash button once to automatically activate the flash.

Force on: Press flash button twice again for force on

**Zoom:** This camera has 8x digital zoom.

Resolution	Digital Zoom
7.0M(3072x2304)	x1
6.0M(2880x2160)	x1
5.0M(2560x1920)	x1
4.0M(2304x1728)	x1
3.0M(2048x1536)	x8
2.0M(1600x1200)	x8
1.3M(1280x960)	x8
VGA (640x480)	x8

**In Capture/Playback/Video mode:**

Zoom in: Press “Zoom in” button to magnify image

Zoom out: Press “Zoom out” button to narrow the image



**Menu:** This function allows you to change settings of this camera in Capture/ Video/ Playback mode.



**Display:** This button allows you to turn the display On or Off.

In “Capture” and “Video” mode: All “capture” information is displayed in the default setting. Press once to display with 3x3 grid (grids can help users to compose a picture). Press the second time to hide the information and press the third time to turn off LCD.

In “Playback” mode: All “Playback” information is displayed in the default setting. Press once to hide the information and once more to turn off LCD.



**Focusing Switch:** This button enables you to manually adjust from “Marco” “Normal” and “Infinity” according to the shooting distance.



**Audio Record:** This button allows you to record audio.

In the “Capture” and “Video” modes, press the “Audio Record” button to start recording. Press this button again to stop recording and return to previous mode.

In the “Playback” mode, press this button to record a voice memo for the current picture.

- Tip:**
1. To save power, LCD display will display “Start recording” and then automatically close the display.
  2. Press any key to restart the LCD display.
  3. The voice memo allows you to record a voice memo of 20 seconds for the current picture.
  4. You can play back the recorded voice memo on your PC.



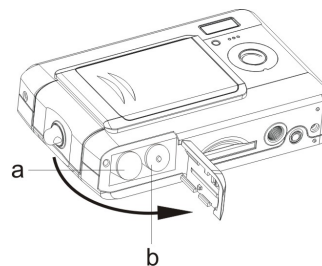
## Loading the Batteries

This camera uses 2 AAA batteries.

1. Slide the battery cover in the direction of the arrow, then lift to open.
2. Load the included batteries into the battery compartment. (a)

## Insert SD card

Insert the SD card into the slot. (b)



\*\*A directional arrow guides the insertion of the SD card in the compartment.

- CAUTION!**
1. It is recommended that rechargeable batteries be used.
  2. To improve battery performance, replace all installed batteries at the same time and keep batteries away from heat
  3. Do not mix battery types or it may cause a fire or explosion. Use only one battery type at one time.
  4. Batteries should be inserted in the battery compartment with the “+” and “-” sides facing correctly.

- NOTE:**
1. Do not open the battery compartment while the USB file transfer is in process.
  2. Once new batteries are loaded, users will need to reset the date and time.
  3. Do not open the battery cover or remove the batteries when the camera is in its “ON” status. Only remove the batteries when the camera is not in use, or in its “OFF” status.
  4. If you do not plan on using the camera for a long period of time, please remove the batteries.

## Basic Settings

Upon turning the camera on, a “welcome image” will appear on the LCD display. Please proceed with the following settings:

**Note:** To select a “Welcome Image”, users can select “Setup” in the “Menu” in “Capture” mode.

### Language Preference Setting

13 languages are available for selection in this camera. Please refer to “Language” setting under “Setup”. (Page 20)

### Date and Time Setting

Please refer to the “Date and Time” setting under setup function. (Page 19)

**Note:** The last date and time setting will be stored when new batteries are installed.

## Formatting the Internal Memory and **SD** Card

### 1. Formatting SD Card

Prior to its initial usage, format the SD card. To format the SD card, please insert your compatible SD card into SD slot. Then proceed with the following steps:

- 1). Press “Menu” button in the “Capture” mode and select “Formatting”.
- 2). You will see a warning message, “Format memory card? All data will be deleted.”.
- 3). Press “OK” button to confirm. The SD card will be formatted.

### 2. Formatting the Internal Memory

- 1). Take out SD card from the slot and format the Internal Memory by following the above mentioned steps .

**NOTE:**

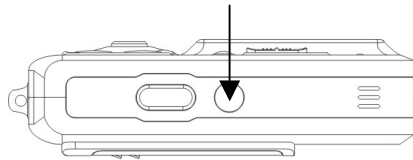
1. Prior to formatting the SD card, deactivate the “Protect SD card” function.
2. The internal memory cannot be formatted when the SD card is in the camera.

## Basic Operating Procedure

From this section, you will learn how to turn the camera on and off, shoot pictures, zoom in and out, view and protect pictures.

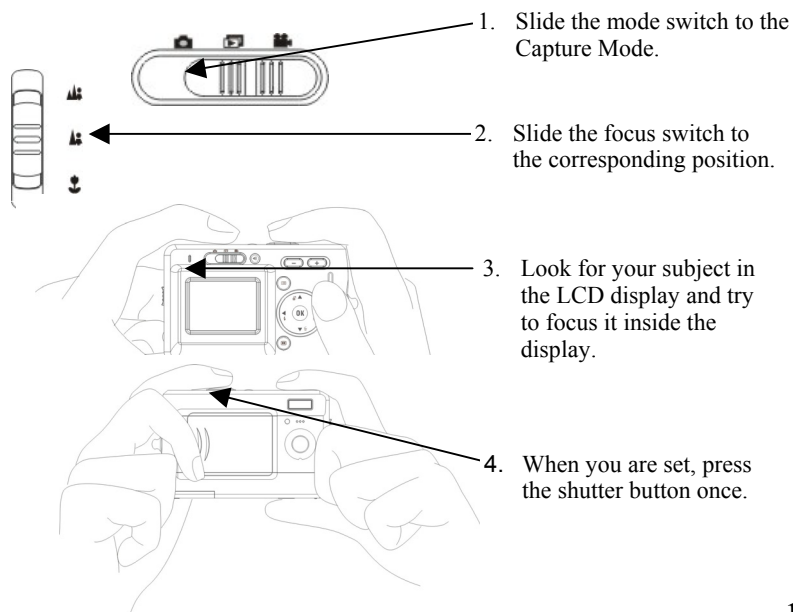
### Turning the Camera ON/OFF

1. To Turn the camera on or off, press the power button located on top of the camera.



**\*\*The backside LED indicator will remain green while the power is turned on\*\***

### Basic Shooting Skills



## Zooming In/Out

This camera has 8x digital zoom. The zoom bar, located on the left side of the LCD display, informs users of the zoom status while the zoom in or out button is pressed. Users can see the result from LCD display.

## Viewing Pictures

Slide the mode switch to “Playback” mode. Users can review still images stored in the camera. The last picture will appear in the LCD display.


**Note:** To zoom in/out pictures, please press “+” or “-” button and then “OK” button. Users will be able to move around the picture.



## Protecting and Deleting Pictures

To protect or delete pictures you just shoot, you just need to slide up or down the “OK” button.

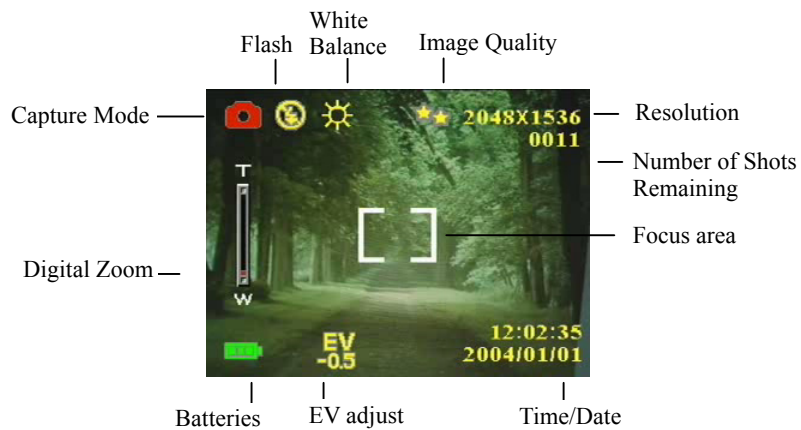
## Three Main Modes and Instructions

This section will describe the three modes included in this camera. An in-depth coverage of these modes will be further described. You may press “Menu” button to make corresponding setting in “Capture”, “Video” and “Playback” mode.

Items	Indications		Page
Capture Mode  	Capture	Scene Resolution Date stamp W/B EV adjust Color Effect Image Quality ISO	15
	Setup	Sound Effect Welcome USB Date and Time TV-Out Frequency Languages Default Format	
	Game	Magic beads Lucky 777 Lottery	

Playback Mode 	Edit	Resize Rotate Crop Customize Voice Memo	24
	Print	DPOF Direct- Print	
	Slide	Play Show Interval Direction Repeat	
Video Mode 	Video	Resolution Color Effect Frame rate	22

## Capture Mode



Slide the mode switch to the Capture Mode. Press the “Menu” button to access the following options. Please press right/left arrow to select “Capture/Setup/Game”. Once you have selected the option, press Up/Down arrow to adjust the setting. Press “OK” to confirm the setting or press “Menu” button to quit.

### “Capture”/“Scene”

Under this mode, the camera will automatically adjust an ideal setting for users to take their pictures. When the camera is set to “Auto” (the default setting of the camera), it will prepare the best setting for users to take their pictures.

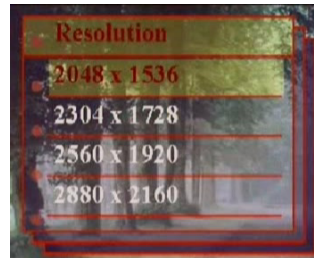
- Auto
- Portrait
- Scenery
- Flower
- Natural Green
- Night Scene
- Night scene Portrait
- Couple shot
- Pre-view



### “Capture”/“Resolution”

This mode allows you to set the record resolution.

640x480  
1280x960  
1600x1200  
2048x1536  
2304x1728  
2560x1920  
2880x2160  
3072x2304



### “Capture”/“Date Stamp”

The date can be set in this mode.

No stamp  
Only date  
Only time  
Date and time

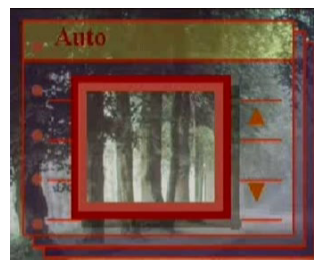


### “Capture”/“White Balance”

Normally, the “Auto” WB setting will set the optimum white balance automatically. If natural colors cannot be obtained with auto WB, you can set the white balance manually to suit the respective light source.

Users can select the following white balance:

Auto  
Sun  
Cloudy  
Tungsten  
Fluorescent

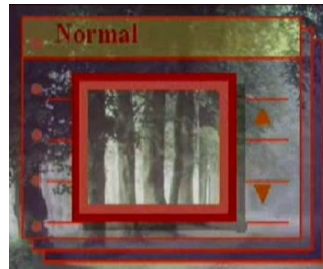




### “Capture”/“EV adjust”

Exposure compensation is used to alter the camera’s standard exposure setting. You can darken or lighten the image. (increased exposure)

Adjust in 0.5 EV in the range -2 to 2.



### “Capture”/“Color effect”

This mode allows can set the color tone of a picture.

- Normal
- Sepia
- Black and White
- Pink
- Green
- Blue



### “Capture”/“Image Quality”

- Basic
- Better
- Best



### “Capture”/“ISO”

The ISO speed can be adjusted in this mode.

Auto  
ISO100



### “Setup”/“USB”

This mode allows you to connect a PC, which will become a storage device or PC camera.

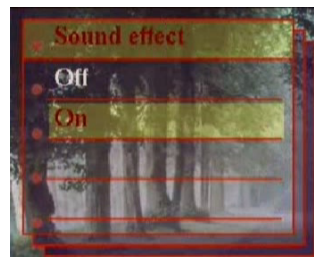
Storage  
PC camera



### “Setup”/“Sound Effect”

This function allows you to turn the sound effect on or off:

Off  
On



### “Setup”/“Date and time”

Reset date and time when change battery.

Edit date and time

XX / XX / XX

XX : XX



Date format: YY/MM/DD

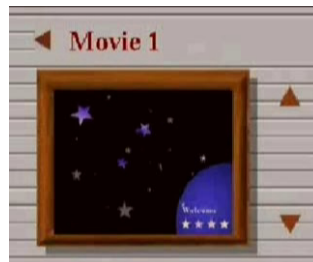
Time format: 24 hours

### “Setup”/“Welcome”

You can select your favorite image or picture as the welcome image.

Movie 1

Custom Pic



### “Setup”/“Frequency”

This mode allows you to select corresponding frequency.

50Hz

60Hz



### “Setup”/“TV-out”

Depending on where your location, different region requires different system for TV-out function. Connect Video cable for TV out.

NTSC

PAL



### “Setup”/“Language”

Users can select from the following languages:

English

Traditional Chinese

Simplified Chinese

French

Italian

German

Spanish

Korean

Japanese

Russian

Polish

Czech

Dutch



### “Setup”/“Default”

Resets the camera to factory setting.



### “Setup”/ “Format”



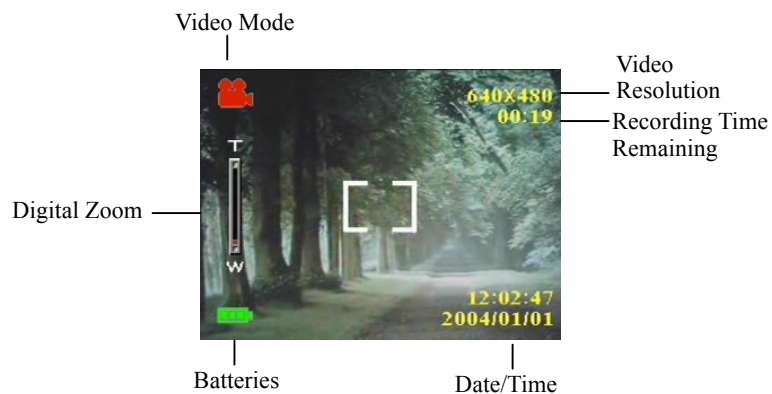
### “Game”

This mode allows you to select your favorite games while you don't take pictures.



**Tip:** This camera offers you 3 games, “Magic Beads”, “Lucky 777” and “Lottery”.

## Video Mode



“Video Mode” allows you to use the camera as a video recorder. The length is based on the capacity of the internal memory or SD card.

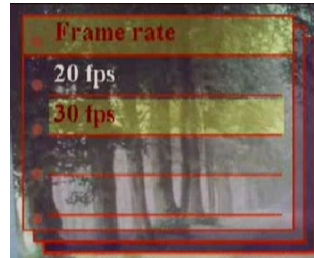
1. Slide the mode switch to “Video Mode”.
2. To start recording a video, press the shutter button. The camera will check the capacity of the memory prior record a video. If it is full, a warning sign will display on the LCD, and will automatically exit the recording state.
3. If there are no warning messages, the camera will start recording. To stop recording, press the shutter button again.
4. To play a video, please slide to “Playback Mode” and press “OK” button.

**Note!** 1. To set the “Self-timer” under the recording mode, press the “right” button once to activate the “Self-timer”. You will have two or ten seconds to get ready after pressing shutter button. The remaining seconds will appear on the LCD display.

**Tip:** 1. The file format is AVI  
2. When you playback video in PC, system will require Windows Media Player 9.0 codec. Please link to Microsoft server for getting the codec. Or you can playback the video through bundled AP.

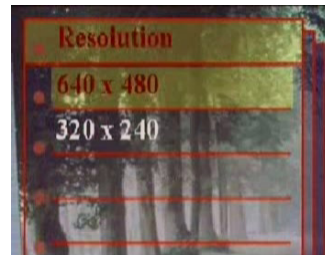
### “Video”/“Frame rate”

20 fps  
30 fps



### “Video”/“Resolution”

This option allows you to select different image sizes.  
320x240  
640x480

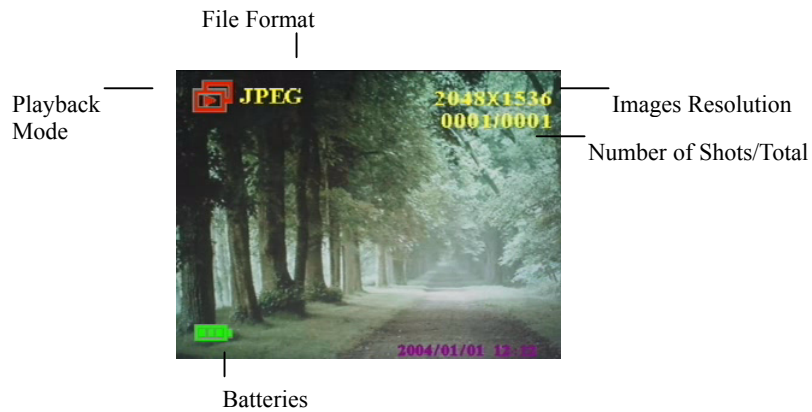


### “Video”/“Color Effect”

Normal  
Sepia  
Black and White



## Playback Mode



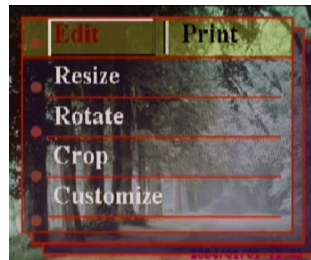
Slide the mode switch to the “Playback Mode”. You may press zoom in/zoom out to magnify or minify pictures. Press up/down or right/left button to review pictures.

Users can press “Menu” button to set “Edit” and “Print” options.

### “Edit”

This mode allows you to modify pictures after taking these pictures.

- Resize
- Rotate
- Crop
- Customize
- Voice Memo





## “Print”

DPOF  
Direct Print

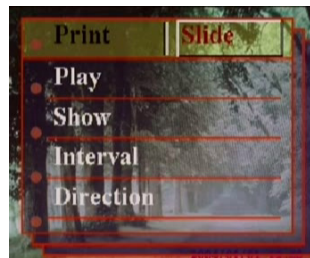


**Tip:** DPOF is a format used to record automatic print information from cameras. By specifying which pictures are to be printed, the pictures can be printed easily by DPOF-compatible printing service labs or on a personal DPOF-compatible printer.

## “Slide”

This mode allows you to playback pictures as a slide show. You may set up the way to playback and interval time according to your preference.

Play  
Show  
Interval  
Direction  
Repeat

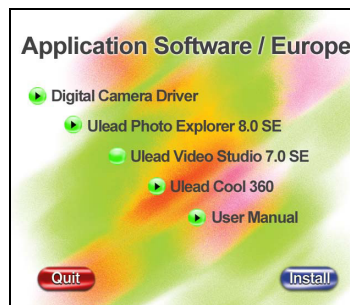


## Making Connections

In this section you will be able to connect the camera to your PC to download or edit photos.

## Installing Software

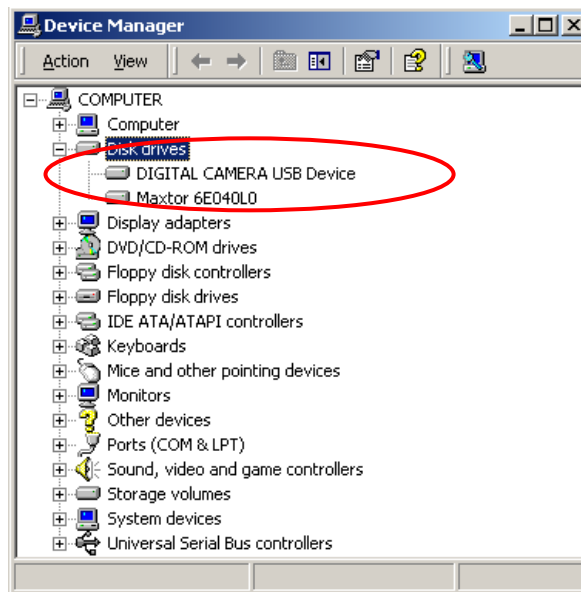
1. Disconnect your camera and PC and insert the CD-ROM into the CD-ROM driver.
2. If you connect your camera to a PC for the first time, please click “Digital Camera Driver”. Select desired options out of 4 options and press the “Install” button.
3. The installation wizard will guide you through the installation.
4. After the installation, connect your camera with the PC. The system will add a portable driver in the “Storage” mode and add a picture device in the “PC Camera” mode.



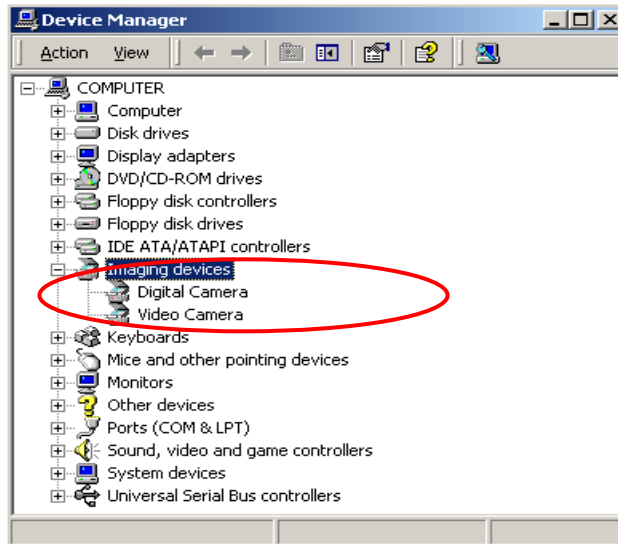
- Caution:**
1. During the installation, the operation system may need to reboot.
  2. If you didn't install the driver before plugging in the USB device. System will detect new device. Please insert the installation CD-ROM and install the driver from the CD-ROM drive following Hardware Wizard instructions.

## Connecting through the USB

This section will show you how to download images from camera to PC through the USB cable.



1. This camera can download pictures or videos to your PC with MSDC support as well as transfer real-time pictures with the picture function of the system.
2. After the camera is set to the “Storage” mode and connected to a PC, an external storage device called “DIGITAL CAMERA USB Device” will appear in “Device Manager”. You can find the recorded files by opening a corresponding portable driver in “My Computer”
3. Copy or remove these files to from camera to your PC. You can start to edit the pictures according to your desired.



4. After the camera is set to the "PC Camera" mode and connected to a PC, two imaging devices, "Digital Camera" and "Video Camera" will appear in "Device Manager". You can review real-time pictures with the imaging program of the operation system, namely "Accessories."

**NOTE:**

1. Voice memo files will include three different file format as ".jpg", ".wav" and ".html". Which have the same file name, but format. The recommended format for users (desiring to include their recorded voice memo in their selected pictures) is HTML.
2. The sound is saved in ".wav" format.
3. The picture device requires support of DirectX® 8.0 or higher.

## Connecting through TV-out

Before you proceed, please determine your corresponding “TV-Out” mode. This camera will enable you to achieve full camera functions by TV-out connection. User can enable each function through the TV monitor instead of the LCD display.

1. Connect the video cable into the video out connector.
2. Connect the other end of the video cable into the TV’s video- and audio-in jack.
3. Turn the camera ON, you should then be able to operate the camera with TV screen. (The LCD will turn off while connected to TV-out)

## Appendix

### Camera Default Setting

Capture Mode	Auto
Resolution	3.1M(2048*1536)
Scene	Auto
Image Quality	Best
White Balance	Auto
EV Adjust	Normal
Color Effect	Normal
ISO	Auto
Date and Time	2004/01/01 12:00:00
Sound Effect	Yes
Languages	English
TV-out	PAL
USB	Storage
Frequency	60Hz
Video Frame Rate	30fps
Date stamp	None

## LED Status

Camera Condition	Status LED		Timer LED
	Green	Red	Red
Power Off	Off	Off	Off
Standby	On	Off	Off
Strobe charging	On	Flicker	Off
Processing	Flicker	Off	Off
Battery low	Off	Flicker	Off
USB connection	On	Off	Off
Self-timer	On	Off	Flicker
Video Recording	On	Off	On

## Information Code

Error	Possible Cause	Corrective Action
Card Full	No more pictures can be stored	Remove the pictures or insert another card
Write-Protect	Card has been protected	To remove write-protect latch of card
Card Error	Cannot record, playback or erase pictures in this card	To format this card or replace another card
Picture Error	This recorded picture cannot be playback with camera	To view the image through PC. If it can not be done, the picture is damaged.
No picture	There's no image in storage, so there's nothing in playback	To take pictures or insert another card with images.
Card Setup	This card is not formatted	To format this card before using.
Battery Empty	Battery low for taking pictures	Installing new or charged batteries.

## Specifications

Features	Content
Max. Resolution	3072x2304
Still Image Size	3072x2304 / 2880x2160 2560x1920 / 2304x1728 2048x1536 / 1600x1200 1280x960 / 640x480
Sensor	CMOS
Lens Aperture	F3.0
Digital Zoom	Up to 8x digital zoom
Internal Memory	Built-in
Estimated number of stored pictures (compression rate 1: 8)	640x480 160 Shots 1280x960 40 Shots 1600x1200 24 Shots 2048x1536 16 Shots 2304x1728 12 Shots 2560x1920 10 Shots 2880x2160 8 Shots 3072x2304 6 Shots
Storage media	SD/MMC
Focus distance	80cm~∞
Video/Audio Clip	Up to 30fps@VGA
Continuous shot	Yes
Self-timer	2/10 sec. self-timer
Compatibility	WIN98/ME/2000/XP MAC 9.2 and above
File Format	JPEG/EXIF 2.2/WAV/DPOF
Dimension	86x55x25 (mm)
Weight	85g
Flash range	3-6 feet
Flash Manual Setting	Auto/Force on/Force off



USB Output	B type mini USB2.0 full speed
Video Output	NTSC/PAL
Battery type	AAA Alkaline
LCD	1.5" TFT
Playback Zoom	Up to 8x
USB storage class support	MSDC
Multiple languages	E/F/G/I/S/K/J/R/P/C/D/TC/SC
Tripod mount	Plastic
Body material	Plastic
Batteries	2xAAA Alkaline
USB Cable	Yes
Video Audio cable	Yes
Hand Strap	Yes
Pouch	Yes
CD-ROM	Yes