

easypix[®]

PHOTO SCANNER P500

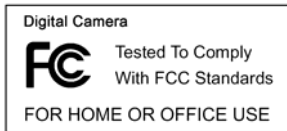


User's Manual

For customers in North and South America

For customers in USA

This device complies with Part 15 of the FCC rules. Operation is subject to the following two conditions:



(1) This device may not cause harmful interference.

(2) This device must accept any interference received, including interference that may cause undesired operation.

For customers in Canada

This Class B digital apparatus meets all requirements of the Canadian Interference-Causing Equipment Regulations.

For customers in Europe



“CE” mark indicates that this product complies with the European requirements for safety, health, environment and customer protection. “CE” mark cameras are intended for sales in Europe.

1. Name of parts

1. Photo Slot
2. Snap Shot / Copy button
3. Power LED
4. USB Cable
5. Photo Tray



- **System Requirements**

This photo converter supports Windows XP and Vista (32-bits) via USB 2.0 only.

a. First insert the photo in to the appropriately sized photo tray.



b. Open the photo tray slot.



c. Insert the tray in to the photo tray slot.



2. Installing the driver and software

To use this photo converter you must install the photo converter driver and ArcSoft PhotoImpression 6 first.

Note: Do not connect the photo converter to the computer while installing the driver.

Main Menu



- **Installing the driver and software for Windows XP**
 1. Turn on the computer.
 2. Insert the installation CD into the CD-ROM drive and the main menu will appear.
 3. Installation for Windows XP, follow the steps below:
 - 3.1. Click on Install Driver to start installation.



3.2. Click Install.



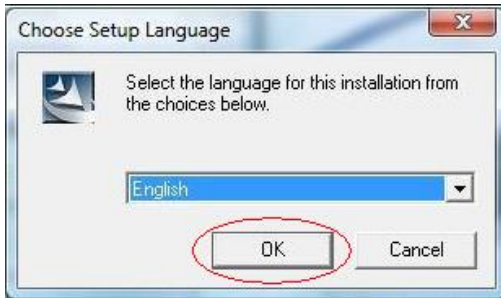
3.3. Installation process will begin.



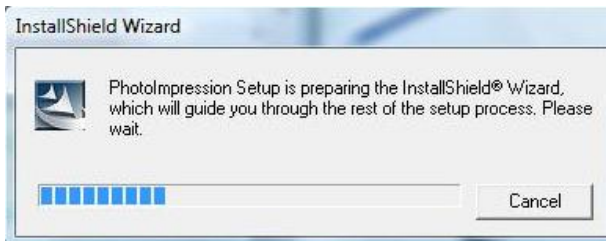
3.4. Once installation is complete. Click Finish.



4. Take out the installation disk and restart the computer. Insert the installation disk again and click on ArcSoft Software.
- 4.1. Select the language you wish to be displayed. Then click OK.



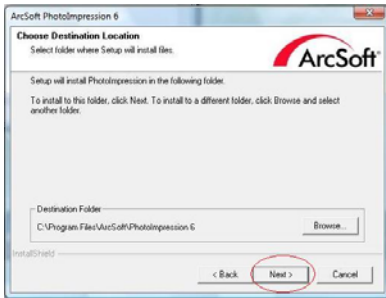
- 4.2. PhotoImpression will start the installation.



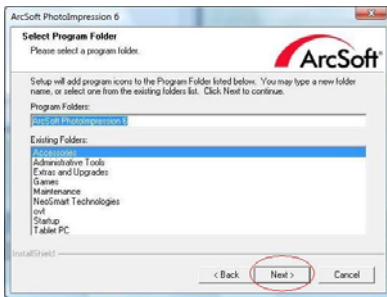
- 4.3. Click on Yes to agree to the terms and conditions.



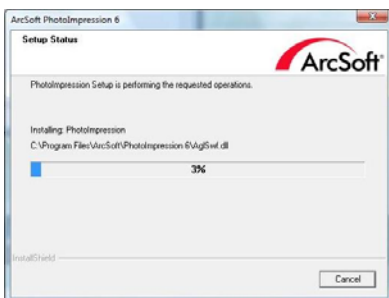
4.4. Click Next to have PhotoImpressions download into your Programs folder.



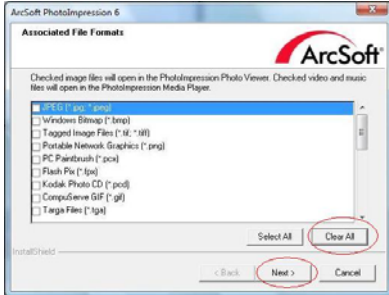
4.5. Click Next to continue.



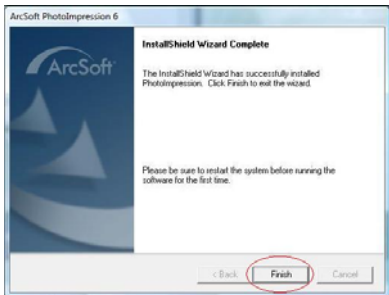
4.6. PhotoImpressions will start the setup process.



4.7. Once you get this to this screen select "Clear All" so that PhotoImpressions does not take over the files on your computer.



4.8. Click on Finish to complete and restart the computer.

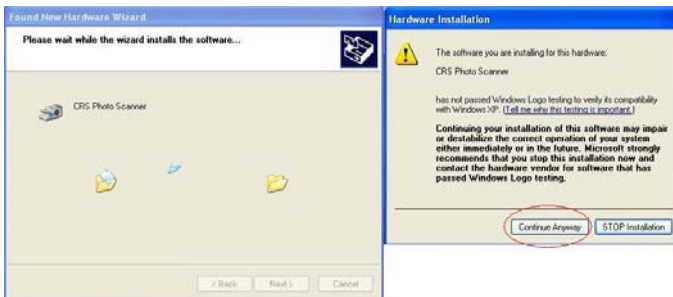


5. Restart the computer and take out the installation disk. Then connect the photo converter to your computer and follow the steps below to synch up the hardware with the software.

5.1. Do not insert the disk into the drive and select "Install the software automatically" (The driver is already installed; there is no need for the driver disk.)



5.2. The Found New Hardware Wizard will automatically look for the driver in your computer to synch the hardware. When the Windows warning message pops up, select "Continue Anyway" to finish synching.



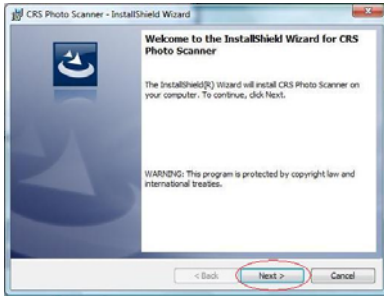
5.3. Once the hardware is successfully installed you will see this message bubble.



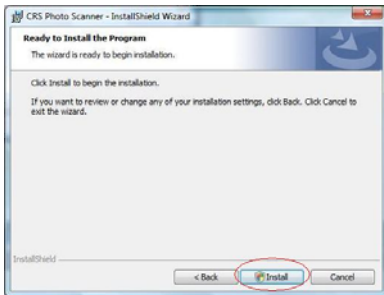
You are now ready to start using your photo converter to start converting your photographs to digital images.

• Installing the driver and software for Windows Vista

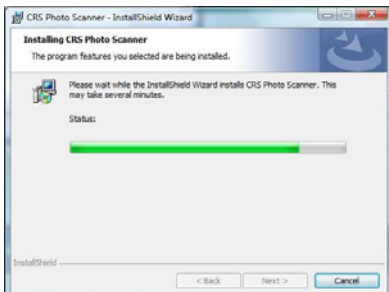
1. Turn on the computer.
2. Insert the installation CD into the CD-ROM drive and the main menu will appear.
3. Installation for Windows Vista, follow the steps below:
 - 3.1. Click on Install Driver to start installation.
 - 3.2 Click Next to start the installation process.



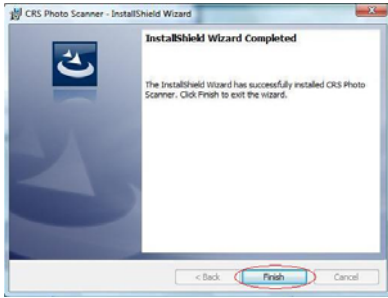
3.3 Click Install.



3.4 Installation process will begin.



3.5 Once installation is complete. Click Finish.

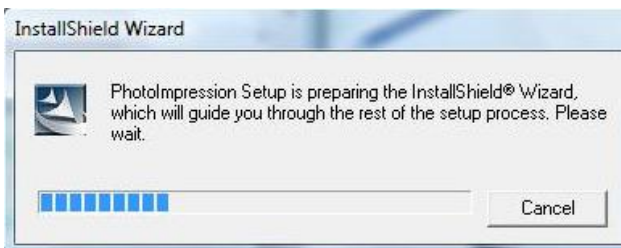


4. Take out the installation disk and restart the computer. Insert the installation disk again and click on ArcSoft Software.

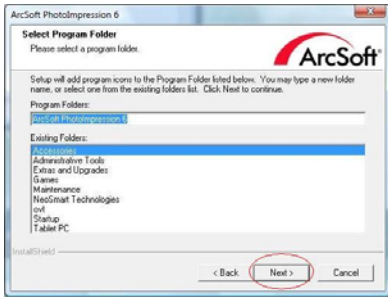
4.1. Select the language you wish to be displayed. Then click OK.



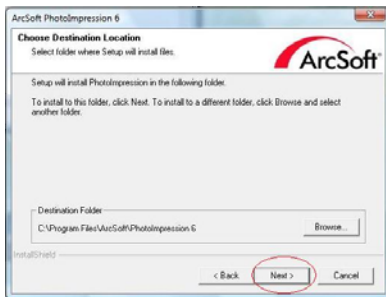
4.2. PhotoImpression will start the installation.



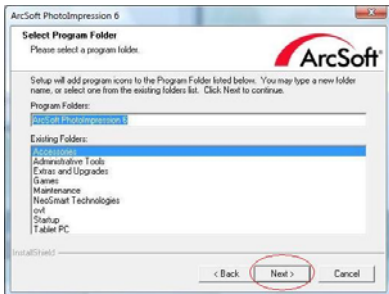
4.3. Click on Yes to agree to the terms and conditions.



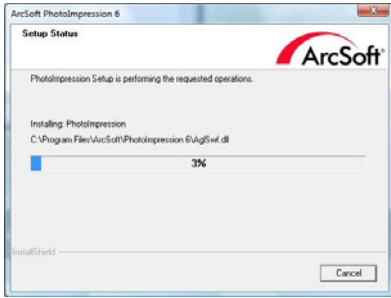
4.4. Click Next to have PhotoImpressions download into your Programs folder.



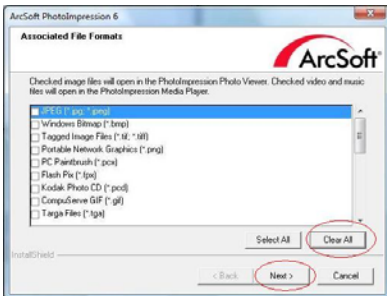
4.5. Click Next to continue.



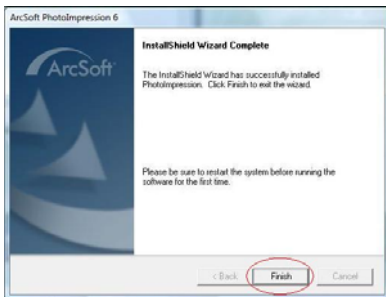
4.6. PhotoImpressions will start the setup process.



4.7. Once you get this to this screen select "Clear All" so that PhotoImpressions does not take over the files on your computer.



4.8. Click on Finish to complete and restart the computer.



5. Restart the computer and take out the installation disk. Then connect the photo converter to your computer and follow the steps below to synch up the hardware with the software.

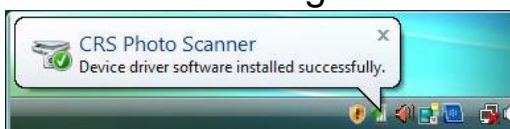
5.1. Do not insert the disk into the drive and click Select "Locate and install driver software (recommended)."



5.2. A Windows warning message will pop up. Select "Install this driver software anyway" to synch the hardware to the software.



5.3. Once the hardware is successfully installed you will see this message bubble on the screen.



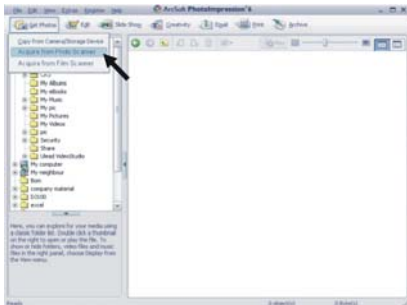
You are now ready to start using your photo converter to start converting your photographs to digital images.

3. Using PhotoImpression 6

1. Double click on the “**PhotoImpression 6**” icon on the desktop and you will see the following:

Follow the instructions to open the software.

Pic1



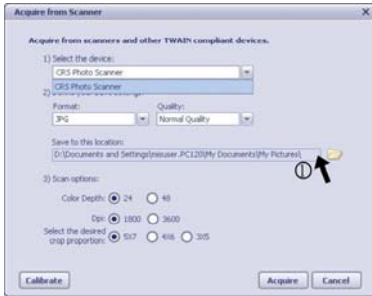
Pic2 For first time users the converter will automatically calibrate.



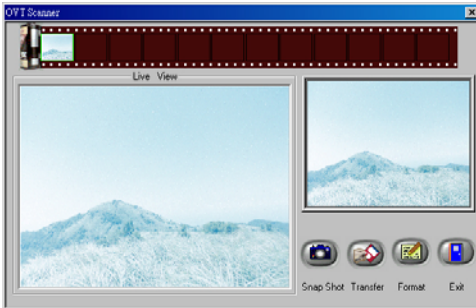
Pic3

① Select the location to save the pictures.

Note: Try to use the calibrate function before each use. (Except the first use, it calibrates automatically.) This helps the light in the converter adjust. Make sure there is nothing in the converter during this process.



Pic4 You can adjust the location of the film by moving the photo tray.



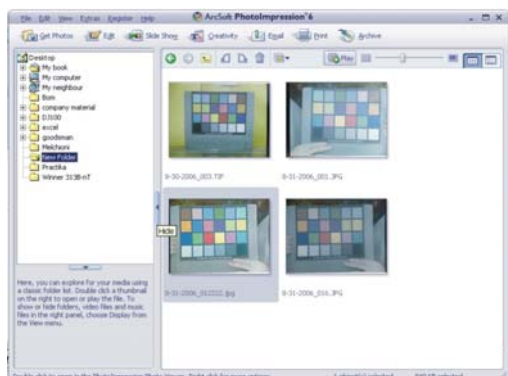
Pic5 Click snap shot on the screen or press the copy button on the photo converter. A green frame will indicate the selected picture(s) in the preview area. The maximum is 12 pictures in the preview area at the top of the film strip. If there are more than 12 pictures copied, the 13th picture will overwrite the 1st picture. If you want to save more than one picture, press the CTRL key on your

keyboard and hold it to select more than one picture on the film strip. Then press the transfer button to transfer or save the selected pictures to your computer.

Note: To ensure the best image quality, please allow about 5-10 seconds between snapshots and transfers for white balance enhancement.



Note: Do not minimize the live view window while transferring the pictures. Once the transferring process is finished, click EXIT and you will be able to see the picture(s) you've transferred. (Example shown below.)



4. Editing Pictures with PhotoImpression 6

First, click once on the picture to select, then use the Arcsoft editing tools to edit the pictures.

- Main Menu

The Main Menu appears in the upper left corner of the workspace. Many of the program's key options and controls are available in the Main Menu. To learn more about a particular menu item and the options and controls it contains, choose from the list below:

* **File**

Scan for Media Files

Launches the Scan for Media Files dialog box which enables you to scan your computer for all photos, music and video files. This process creates a media library that helps the program perform as fast as possible. You can scan your computer in one of the following three ways:

- **Scan Primary Folders Only** - Scans folders most commonly used for storing media, such as My

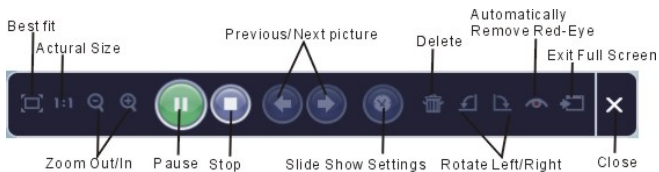
Documents, My Pictures and Desktop.

- **Scan All Folders** - Scans your entire computer for media (except Windows and Program Files folders).
- **Select the folders you want to scan** - Allows you to choose the folders for scanning.

* **View**

Full Screen/Play (F4)

Plays or displays the first selected file in full screen.



- Main Buttons

* **Get Photos**

Acquire from Scanner

Here you can:

- Acquire images from connected TWAIN compliant devices such as scanners and some digital cameras.
- Assign names to image files as they are acquired (using today's date or a descriptive word).

How to acquire images from a TWAIN compliant device:

1. Select a scanner or other TWAIN device from the drop down list. Choose the file format you want to use for the acquired images (JPG, BMP, TIF, PCX, TGA).
2. If you've selected JPG as the file format, select the image quality for the acquired images (Highest, High, Normal, Low). The lower the quality selected, the higher the level of compression applied.
3. Choose a destination folder for the photos by clicking "Browse" (folder icon) and navigating to the folder.
4. Choose a naming method (today's date or description). Enter a description if applicable.
5. Click "Acquire".

* **Edit**

Photo Editing Tools

The Photo Editing Tools module includes a complete set of photo enhancement, editing and retouching controls.

The window can be stretched to provide a large size view of the active photo. Double click the module's tool bar to maximize the window to fill the computer screen.

In addition to the large photo workspace, the Photo Editing Tools module includes five distinct sets of controls:

Enhance

The Enhance feature includes two types of controls:



Auto Enhance

Click the "Auto Enhance" button to improve the overall quality of your pictures with a single click.

Manual Fix

For precise image enhancement control, adjust the brightness, contrast and sharpen sliders.

How to enhance a photo manually:

1. Move the sliders to adjust the level of brightness and contrast and to make the image sharper.
2. Use the zoom slider to get a closer look at how the adjustment affects the photo.
3. Click "Apply" if you like the result. Click "Cancel" if you do not.

Color

This feature is designed to fix digital photos that have unnatural color or appear too dark. It's also great for fixing scanned versions of old prints that have faded or whose colors have changed after many years.

How to fix the color of a photo:

1. Drag the color balance sliders to make the photo color appear more natural. Add red or yellow to make the photo warmer. Add blue or green to make the photo cooler.
2. Drag the Lighter/Darker slider to the left to reveal details hidden in a dark photo or to the right to make a faded photo look new again.
3. Click "Apply" if you like the result. Click "Cancel" if you do not.

Red-Eye

This feature makes it easy for you to fix a red eye - a common problem in flash photography.

There are two ways to fix redevye:



Auto Fix

1. Simply click the "Fix Red-Eye" button to automatically find and fix all red-eye.
2. If not all of the red eye is fixed, use the "Click to Fix" method.

Manual Fix

1. Use the zoom slider on the toolbar to zoom in on the photo.
2. Drag the small white box inside the zoom navigator to move over a red eye.
3. Place your cursor directly over the red eye and click.
4. Repeat the process until all the red eyes are fixed.
5. Click "Undo" if you make a mistake or don't like the result.

Crop

This feature enables you to trim photos for a dramatic effect or cut off the distracting parts of a picture.

How to use the crop function:

1. Choose the crop orientation (portrait or landscape).
2. Select a fixed proportion for the crop rectangle (4:6, 5:7, 8:10) or choose "Custom" if you want to use a different proportion.
3. Resize the crop rectangle by clicking and dragging the red lines.
4. Move the crop rectangle into position by clicking and dragging inside the red box.
5. Click "Crop". The area inside the rectangle will be kept, the area outside will be trimmed away.
6. Click "Undo" if you make a mistake or don't like the result.

Straighten

This feature enables you to fix photos that appear to be tilted.

How to use Straighten:

1. Move the slider (or click the rotate buttons) until the photo appears straight.
2. Use the superimposed grid lines for vertical and horizontal reference.
3. Click "Apply" if you like the result. Click "Cancel" if you do not.

Blur Background

This feature can be used in a subtle way -- to tone down un-important background details, or for dramatic effect -- by making the main subject of a photo "pop out" of the picture.

How to use the Blur Background function:

1. With your cursor, trace a line around the person or object you want to stand out. When you release the mouse button, the area outside the traced line will become slightly blurred.
2. Drag the first slider to make the transition between the blurred and non-blurred area sharp or smooth.
3. Drag the second slider to increase or decrease the amount of blur.
4. Click "Apply" if you like the result. Click "Cancel" if you do not.

Saving Your Results

When you're done editing a photo, click **Save As** to save your results. You can choose to overwrite the original file or save a new one.

Click "Close" to exit the Photo Editing Module.

Retouch



Healing Brush

The Healing Brush is good for fixing dust, scratches and removing skin blemishes.

How to use the Healing Brush to fix a skin blemish:

1. Establish a source point for the Healing Brush by holding the Shift key and clicking on an area of the skin that is close in color and texture to the area you want to heal.
2. Use the zoom control to zoom in on the blemish.
3. Adjust the size of the healing brush so the cursor (circle) is only slightly larger than the blemish.
4. Paint over the blemish. The area will be concealed.

Click "Undo" if you make a mistake or don't like the result.



Clone

The Clone tool is good for removing unwanted elements from a photo. It can also be used for a fun effect, like moving a nose from one person to another.

How to use the Clone tool to remove a telephone pole from the background of a photo:

1. Establish a source point for the Clone tool by holding the Shift key and clicking on an area of the sky that you want to use to paint over the telephone pole.
2. Adjust the brush size so the cursor (circle) is only slightly larger than the widest part of the telephone pole.
3. Click and hold your mouse button and carefully paint over the telephone pole. Do not release the mouse button until the job is done. The sky will be cloned into place.

Click "Undo" if you make a mistake or don't like the result.



Lighten/Darken

The Lighten/Darken tool is good for adjusting specific areas of a photo.



Smudge

Simulate the smearing of wet paint. Please click and drag the sliders below to change the brush size and sharpness.



Sharpen

Sharpen blurry areas. Click and drag the sliders below to change the brush size and transparency.



Blur

Smooth out rough areas. Click and drag the sliders below to change the brush size and intensity.



Paint Brush

Allows you to "paint" on your image when you click and drag the mouse. Click and drag the sliders below to change the brush size and transparency.



Line

Draw a straight line in the photo. Click and drag the sliders below to change the line width and transparency.



Eraser

Simulate an eraser, removing the image painting by paintbrush and line tools from your photo. Click and drag the sliders below to change the eraser size and effect.

Saving You Results

When you're done, click "Save As" button to save your results. You can overwrite the original file or save it as a new one. Or click "Cancel" to exit without saving.

Click "Close" to exit the Photo Editing Module.

Note: For more detailed information, please refer to the [Help section] of the program.

4. Specification

Interface:	USB 2.0
Image Sensor:	5 MEGA PIXEL CMOS SENSOR
Lens:	FNO= 3.0 , 4 GLASS ELEMENTS, VIEW ANGLE 54 .
Frame Rate (Max):	5 MEGA PIXEL (2592X1800) 2 FPS
Focus Range:	Fixed focus
Exposure Control:	Automatic
Color Balance:	Automatic
Scan high resolution	5 MEGA PIXEL EQUALS TO 1800 DPI (ENHANCES TO 3600 DPI VIA INTERPOLATION)
PHOTO SIZES	3"X5", 4"X6", 5"X7"
Data Conversion	10 bits per color channel
Scan Method	Single pass
Light Source	LIGHT BAR (WHITE LED)
Power:	Powered from USB port
Dimensions	10.4 " X 6.7" X 8.7"
Software	Arcsoft PhotoImpression 6 included
Operating Systems	WINDOWS XP SP2, WINDOWS VISTA (32-BIT) *512 MB of RAM or higher (recommended), 256 MB of available hard disk space or higher (recommended)

Trouble shooting

If the photo converter does not work and the error message: "OV Code 10" appears, restart the computer without disconnecting the photo converter from the computer.