

easypix®
Keep it real.
CyberScanner

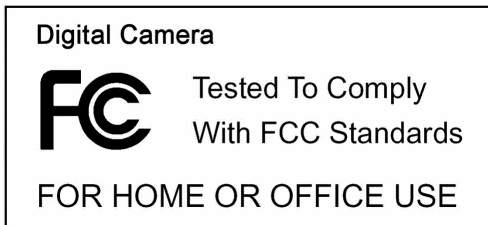


User manual

For customers in North and South America

For customers in USA

This device complies with Part 15 of the FCC rules. Operation is subject to the following two conditions:



- (1) This device may not cause harmful interference.
- (2) This device must accept any interference received, including interference that may cause undesired operation.

For customers in Canada

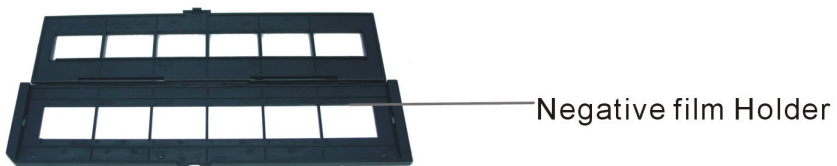
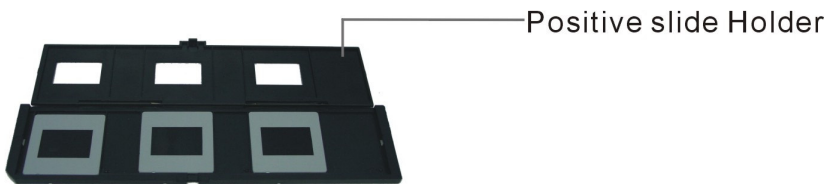
This Class B digital apparatus meets all requirements of the Canadian Interference-Causing Equipment Regulations.

For customers in Europe



“CE” mark indicates that this product complies with the European requirements for safety, health, environment and customer protection. “CE” mark cameras are intended for sales in Europe.

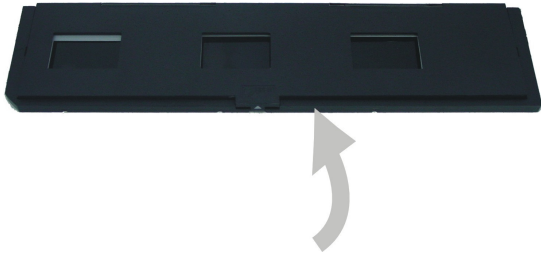
1. Name of parts



Note: This film scanner supports Windows XP/Vista and USB 2.0 only.

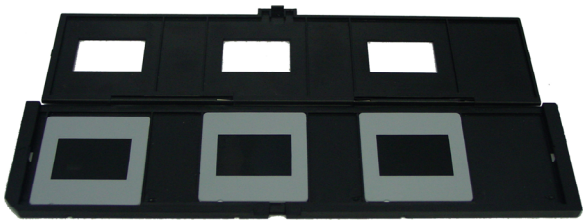
2. How to install film into the film box

a. Open the film box as illustrated

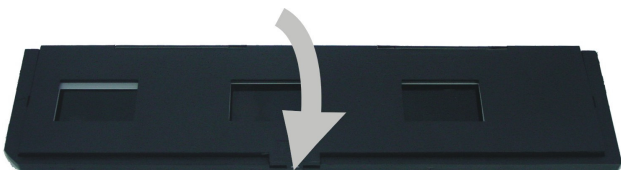


b. Put a film in the film slot as shown.

Note: Do not flip negatives, if flipped, the pictures will be scanned backwards.



c. Close the film box.



3. Installing the software and driver

To use the film scanner you must install the film scanner driver and ArcSoft PhotoImpression 6 in advance.

• Installing the driver.

1. Turn on the computer.
2. Insert the installation CD into the CD-ROM drive and the installation CD menu will appear.
3. When you see the following screen, choose “**Scanner Driver**”.
4. Follow the on-screen instructions.
5. Restart the computer.



• Installing the software

1. Insert the installation CD into the CD-ROM drive and the installation CD menu should appear.
2. When you see the following screen, choose “**Arcsoft Software Suite**” to install the software.
3. Follow the instructions on-screen instructions.
4. The installed software will automatically create a “**PhotoImpression 6**” logo on your desktop.

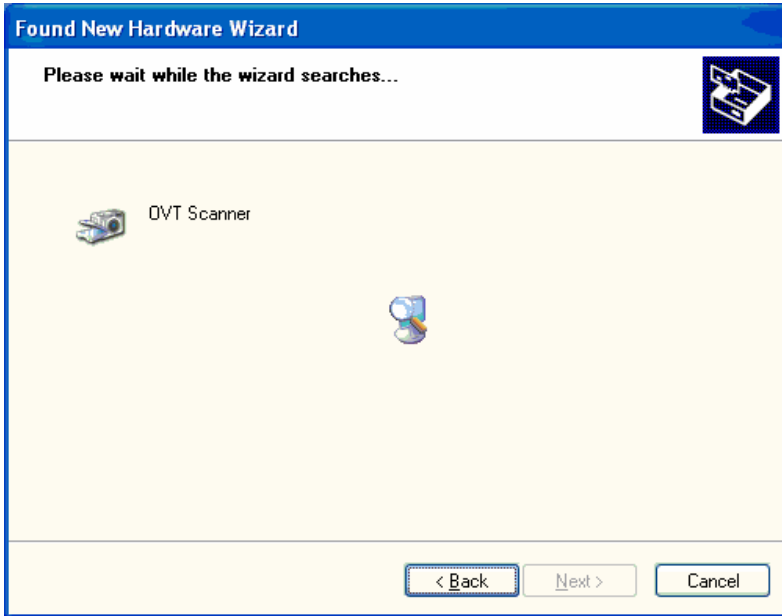
- **New Hardware Wizard**

1. After connecting the film scanner to the computer with USB cable, the new hardware wizard will detect the new device.

2. Follow the instructions on screen.

Recommended to select “Install the software automatically.”

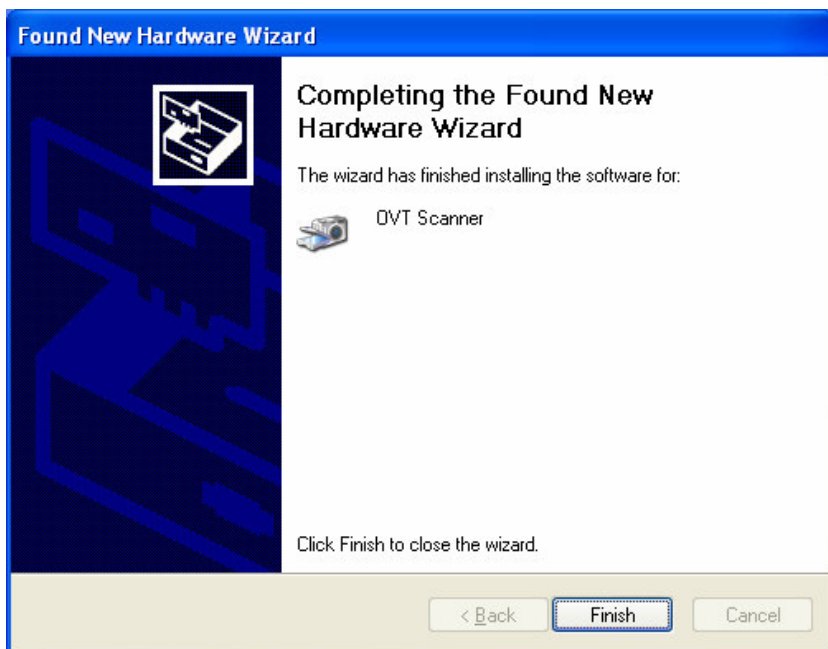




Choose “continue anyway” button.



3. Select “Finish” button to complete the installation.



4. Connecting the film scanner to your computer with the USB cable

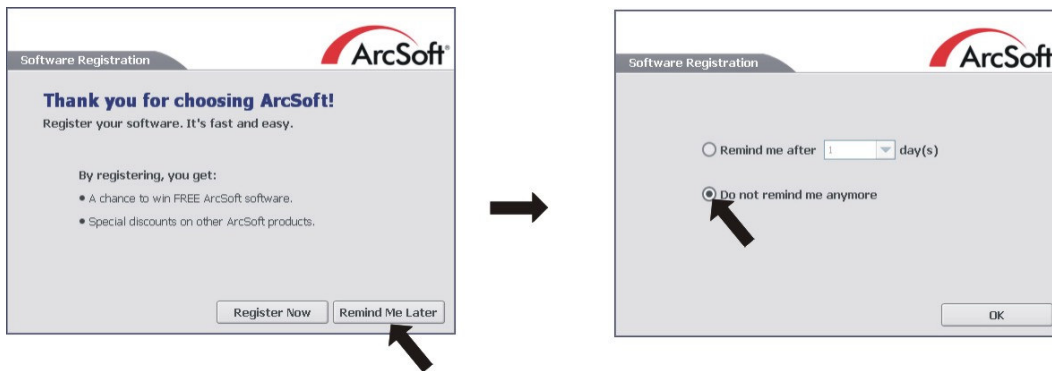
Note: For first time users, do not plug the scanner into the computer while the slot is inserted in the scanner. Please remove the film slot before connecting to the computer.

Once connected, the power LED light will be red.

5. Using the film scanner

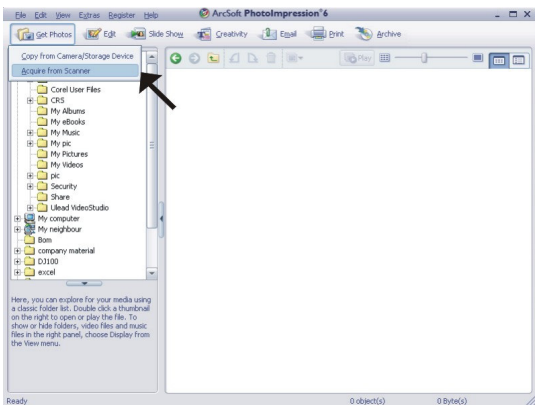
1. Click on the “**PhotoImpression 6**” icon on the desktop and you will see the following:

Click later to open the software.

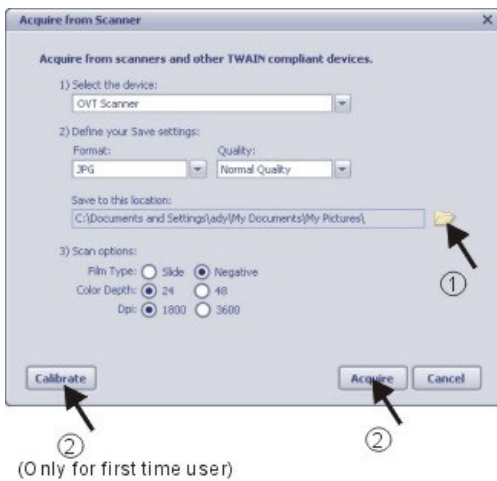


2. Follow the instructions to open the software.

Pic1



Pic2



White-black film

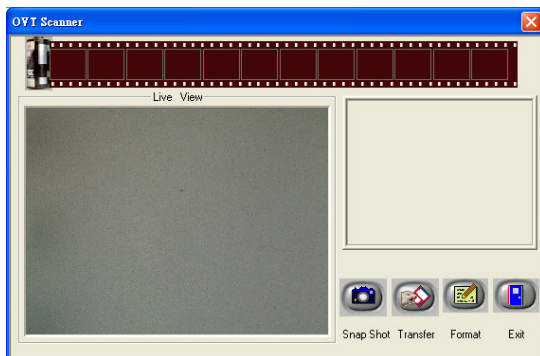
① Select the location to save the pictures.

Please note: If you want to scan white-black film, please choose "Slide" type, otherwise the picture you scanned on the computer will change color.

Pic3 (Only available if you click Calibrate)

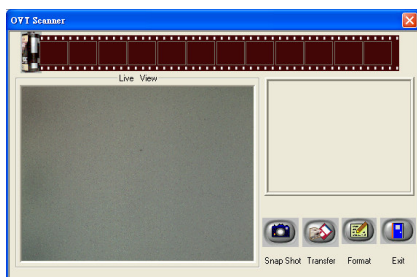


Pic4 You can adjust the location of the film by moving the film box.

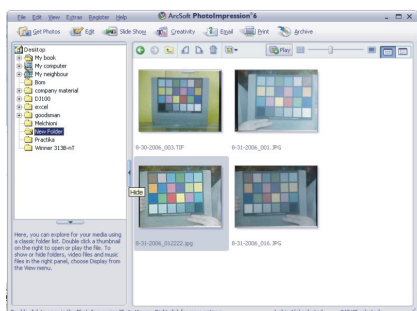


Pic5 Click snap shot on the screen or press the copy button on the film scanner. A green frame will indicate the selected picture(s) in the preview area, the maximum is 12 pictures in the preview area. If there are more than 12 pictures scanned, the 13th picture will overwrite the 1st picture. If you want to save one or more pictures, press the shift key to continue selecting pictures or the CTRL key to select a single picture. Then press the transfer button to transfer or save selected pictures to your computer.

Note: To ensure the best image quality, please allow about 5 seconds between snapshots and transfers for white balance enhancement.



Note: Please do not minimize the window of scanning screen after transferring the pictures. If you want to see the scanned pictures, click EXIT/x and you will see the picture you scanned before. (Example as below)



6. Now you can start to edit the picture as you like

First, click on the picture to select, then use the Arcsoft tools to edit the pictures.

- Main Menu

The Main Menu appears in the upper left corner of the workspace. Many of the program's key options and controls are available in the Main Menu. To learn more about a particular menu item and the options and controls it contains, choose from the list below:

* **File**

Scan for Media Files

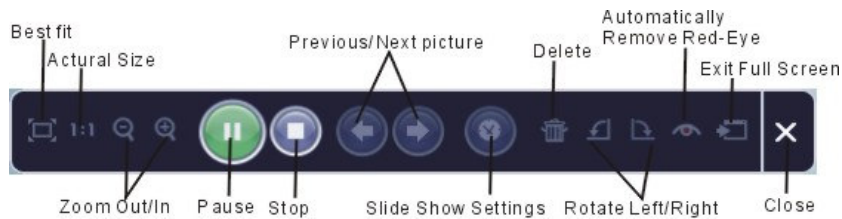
Launches the Scan for Media Files dialog box which enables you to scan your computer for all photos, music and video files. This process creates a media library that helps the program perform as fast as possible. You can scan your computer in one of the following three ways:

- **Scan Primary Folders Only** - Scans folders most commonly used for storing media, such as My Documents, My Pictures and Desktop.
- **Scan All Folders** - Scans your entire computer for media (except Windows and Program Files folders).
- **Select the folders you want to scan** - Allows you to choose the folders for scanning.

* **View**

Full Screen/Play (F4)

Plays or displays the first selected file in full screen view.



- Main Buttons

* Get Photos

Acquire from Scanner

Here you can:

- acquire images from connected TWAIN compliant devices such as scanners and some digital cameras.
- assign names to image files as they are acquired (using today's date or a descriptive word).

How to acquire images from a TWAIN compliant device:

1. Select a scanner or other TWAIN device from the drop down list.
2. Choose the file format you want to use for the acquired images (JPG, BMP, TIF, PCX, TGA).
3. If you've selected JPG as the file format, select the image quality for the acquired images (Highest, High, Normal, Low). The lower the quality selected, the higher the level of compression applied.
4. Choose a destination folder for the photos by clicking "Browse" (folder icon) and navigating to the folder.
5. Choose a naming method (today's date or description). Enter a description if applicable.
6. Click "Acquire".

* **Edit**

Photo Editing Tools

The Photo Editing Tools module includes a complete set of photo enhancement, editing and retouching controls.

The window can be stretched to provide a large size view of the active photo. Double click the module's tool bar to maximize the window to fill the computer screen.

In addition to the large photo workspace, the Photo Editing Tools module includes five distinct sets of controls:

Enhance

The Enhance feature includes two types of controls:



Auto Enhance

Click the "Auto Enhance" button to improve the overall quality of your pictures with a single click.

Manual Fix

For precise image enhancement control, adjust the brightness, contrast and sharpen sliders.

How to enhance a photo manually:

1. Move the sliders to adjust the level of brightness and contrast and to make the image sharper.
2. Use the zoom slider to get a closer look at how the adjustment affects the photo.

3. Click "Apply" if you like the result. Click "Cancel" if you do not.

Color

This feature is designed to fix digital photos that have unnatural color or appear too dark. It's also great for fixing scanned versions of old prints that have faded or whose colors have changed after many years.

How to fix the color of a photo:

1. Drag the color balance sliders to make the photo color appear more natural. Add red or yellow to make the photo warmer. Add blue or green to make the photo cooler.
2. Drag the Lighter/Darker slider to the left to reveal details hidden in a dark photo or to the right to make a faded photo look new again.
3. Click "Apply" if you like the result. Click "Cancel" if you do not.

Red-Eye

This feature makes it easy for you to fix a red eye - a common problem in flash photography.

There are two ways to fix redevye:



Auto Fix

1. Simply click the "Fix Red-Eye" button to automatically find and fix all red-eye.
2. If not all of the red eye is fixed, use the "Click to Fix" method.

Manual Fix

1. Use the zoom slider on the toolbar to zoom in on the photo.

2. Drag the small white box inside the zoom navigator to move over a red eye.
3. Place your cursor directly over the red eye and click.
4. Repeat the process until all the red eyes are fixed.
5. Click "Undo" if you make a mistake or don't like the result.

Crop

This feature enables you to trim photos for a dramatic effect or cut off the distracting parts of a picture.

How to use the crop function:

1. Choose the crop orientation (portrait or landscape).
2. Select a fixed proportion for the crop rectangle (4:6, 5:7, 8:10) or choose "Custom" if you want to use a different proportion.
3. Resize the crop rectangle by clicking and dragging the red lines.
4. Move the crop rectangle into position by clicking and dragging inside the red box.
5. Click "Crop". The area inside the rectangle will be kept, the area outside will be trimmed away.
6. Click "Undo" if you make a mistake or don't like the result.

Straighten

This feature enables you to fix photos that appear to be tilted.

How to use Straighten:

1. Move the slider (or click the rotate buttons) until the photo appears straight.
2. Use the superimposed grid lines for vertical and horizontal reference.
3. Click "Apply" if you like the result. Click "Cancel" if you do not.

Blur Background

This feature can be used in a subtle way -- to tone down un-important background details, or for dramatic effect -- by making the main subject of a photo "pop out" of the picture.

How to use the Blur Background function:

1. With your cursor, trace a line around the person or object you want to stand out. When you release the mouse button, the area outside the traced line will become slightly blurred.
2. Drag the first slider to make the transition between the blurred and non-blurred area sharp or smooth.
3. Drag the second slider to increase or decrease the amount of blur.
4. Click "Apply" if you like the result. Click "Cancel" if you do not.

Saving Your Results

When you're done editing a photo, click Save As to save your results. You can choose to overwrite the original file or save a new one.

Click "Close" to exit the Photo Editing Module.

Retouch



Healing Brush

The Healing Brush is good for fixing dust, scratches and removing skin blemishes.

How to use the Healing Brush to fix a skin blemish:

1. Establish a source point for the Healing Brush by holding the Shift key and clicking on an area of the skin that is close in color and texture to the area you want to heal.
2. Use the zoom control to zoom in on the blemish.
3. Adjust the size of the healing brush so the cursor (circle) is only slightly larger than the blemish.

4. Paint over the blemish. The area will be concealed.

Click "Undo" if you make a mistake or don't like the result.



Clone

The Clone tool is good for removing unwanted elements from a photo. It can also be used for a fun effect, like moving a nose from one person to another.

How to use the Clone tool to remove a telephone pole from the background of a photo:

1. Establish a source point for the Clone tool by holding the Shift key and clicking on an area of the sky that you want to use to paint over the telephone pole.
2. Adjust the brush size so the cursor (circle) is only slightly larger than the widest part of the telephone pole.
3. Click and hold your mouse button and carefully paint over the telephone pole. Do not release the mouse button until the job is done. The sky will be cloned into place.

Click "Undo" if you make a mistake or don't like the result.



Lighten/Darken

The Lighten/Darken tool is good for adjusting specific areas of a photo.



Smudge

Simulate the smearing of wet paint. Please click and drag the sliders below to change the brush size and sharpness.



Sharpen

Sharpen blurry areas. Click and drag the sliders below to change the brush size and transparency.



Blur

Smooth out rough areas. Click and drag the sliders below to change the brush size and intensity.



Paint Brush

Allows you to "paint" on your image when you click and drag the mouse. Click and drag the sliders below to change the brush size and transparency.



Line

Draw a straight line in the photo. Click and drag the sliders below to change the line width and transparency.



Eraser

Simulate an eraser, removing the image painting by paintbrush and line tools from your photo. Click and drag the sliders below to change the eraser size and effect.

Saving Your Results

When you're done, click "Save As" button to save your results. You can overwrite the original file or save it as a new one. Or click "Cancel" to exit without saving.

Click "Close" to exit the Photo Editing Module.

Note: For more detailed information, please refer to the [Help section] of the program.

7. Specification

Interface:	USB 2.0
Image Sensor:	1/1.8" inch 5 mega CMOS sensor (5,174,400 pixels)
Lens:	F no.= 2.0, 4 Glass elements, Half-field Angle=15°
Focus Range:	Fixed focus
Exposure Control:	Automatic
Color Balance:	Automatic
Scan high resolution	5M equal to 1,800 dpi (enhances to 3,600 dpi via interpolation)
Data Conversion	10 bits per color channel
Scan Method	Single pass
Light Source	Back light (3 white LEDs)
Power:	Powered from USB port
Dimensions	90mm(H) X 90mm(W) X 165mm(L)
Software	Arcsoft PhotoImpression 6 included
Language	English, French, German, Italian, Spanish, Traditional Chinese, Simplify Chinese, Japanese
Operating Systems	Windows XP/Vista